

# Public Kick-Off Meeting

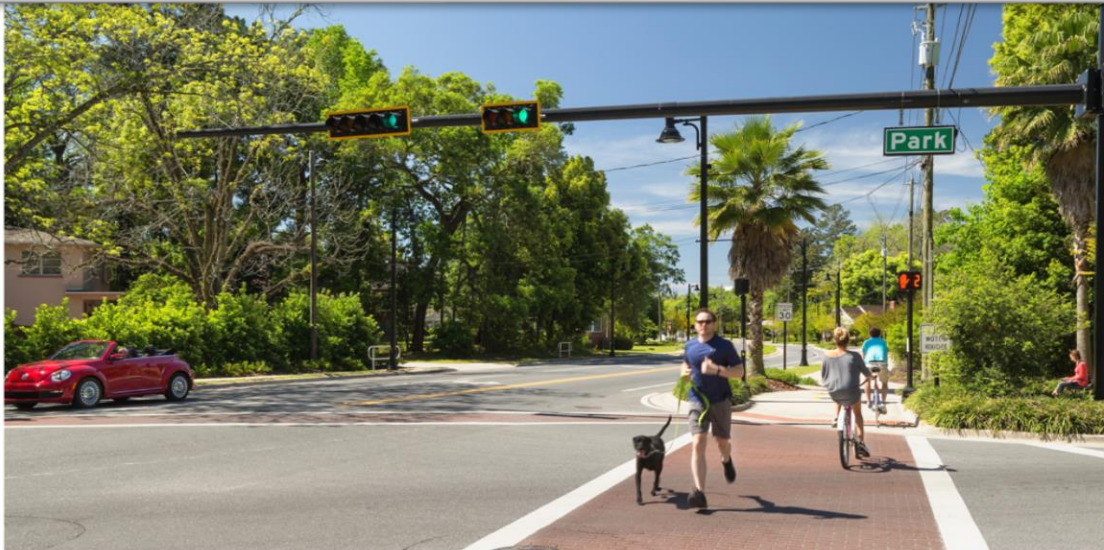
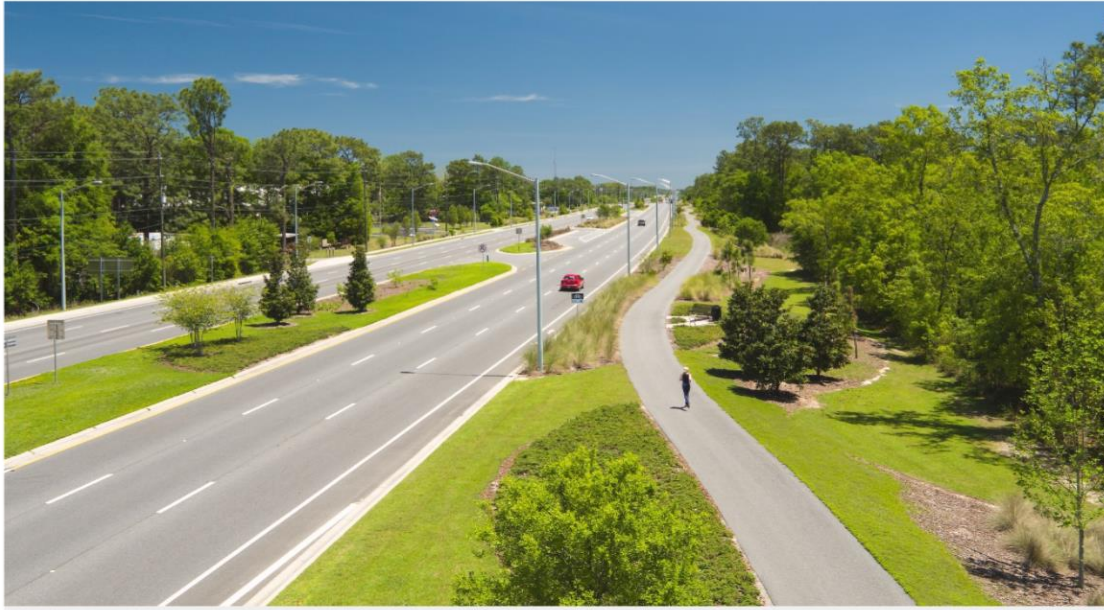
---

## Northeast Gateway: Welaunee Boulevard Project Development & Environment Study

From Fleischmann Road to Centerville Road at Shamrock Street  
Leon County, Florida

March 11, 2019

# Blueprint Project Examples



# Overview

1

Purpose and Need

2

Building Upon A Solid Foundation

3

Scope of Services

4

Typical Sections

5

Project Schedule

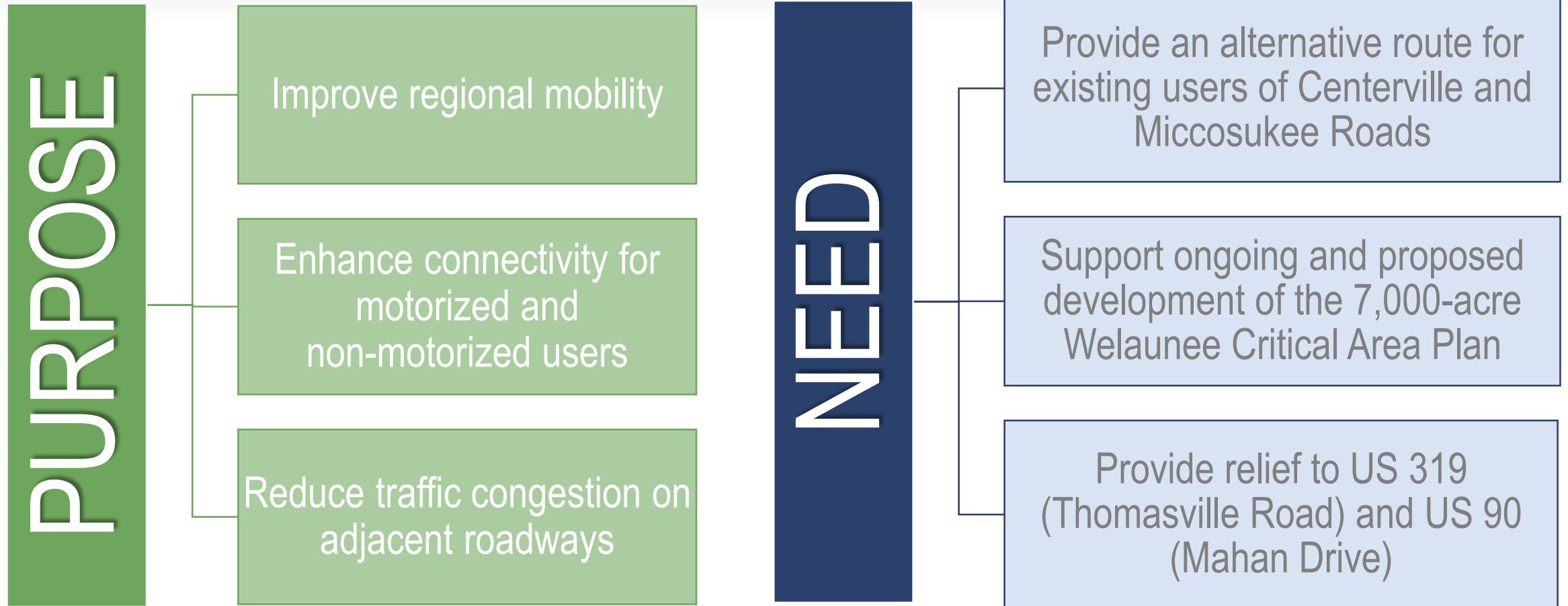
6

Staying Involved

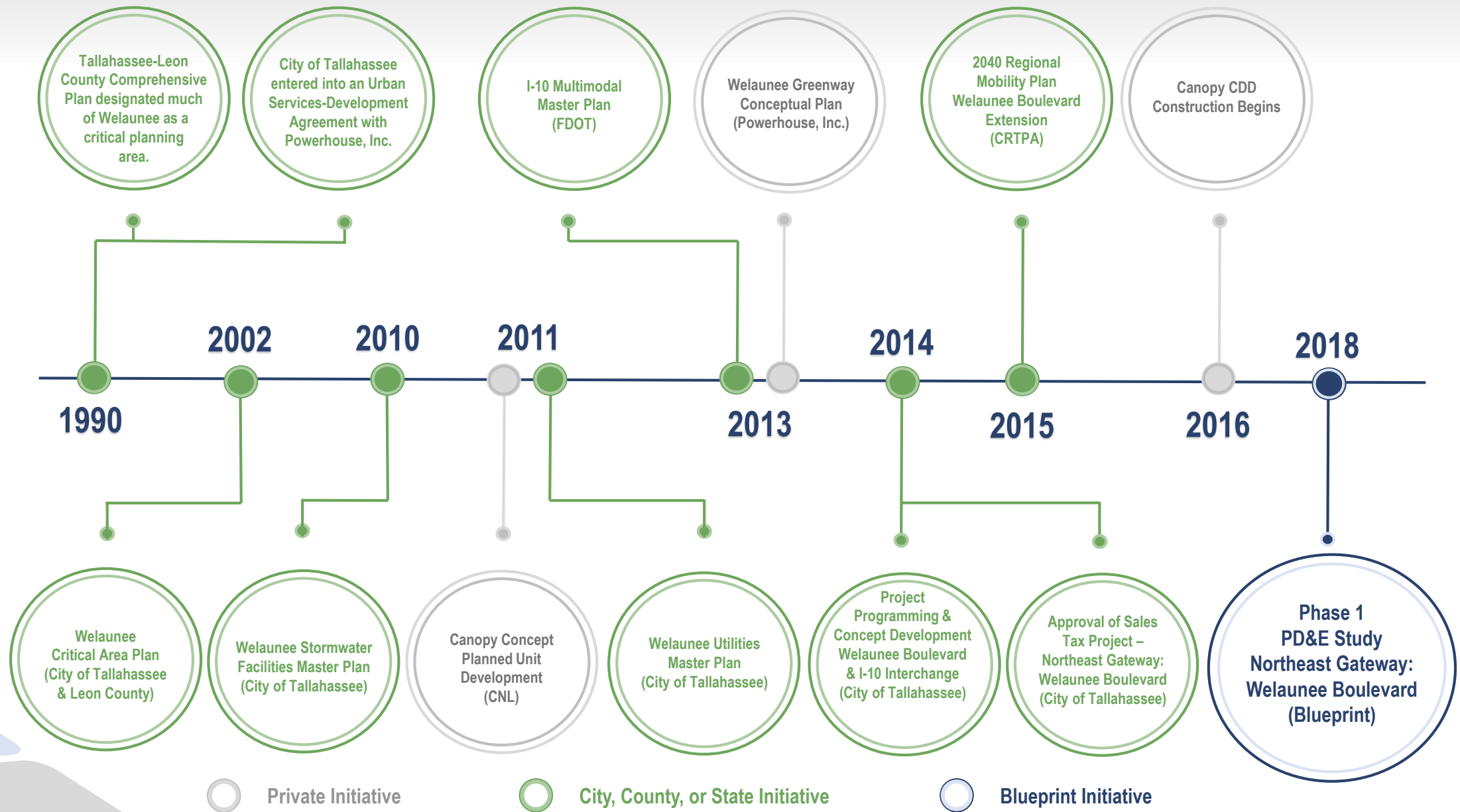
Visit the project website at  
**NEGateway.com**



# Purpose and Need



# Building Upon A Solid Foundation









## North of I-10





# Project Study Area

Canopy  
Development

South of I-10

North of I-10



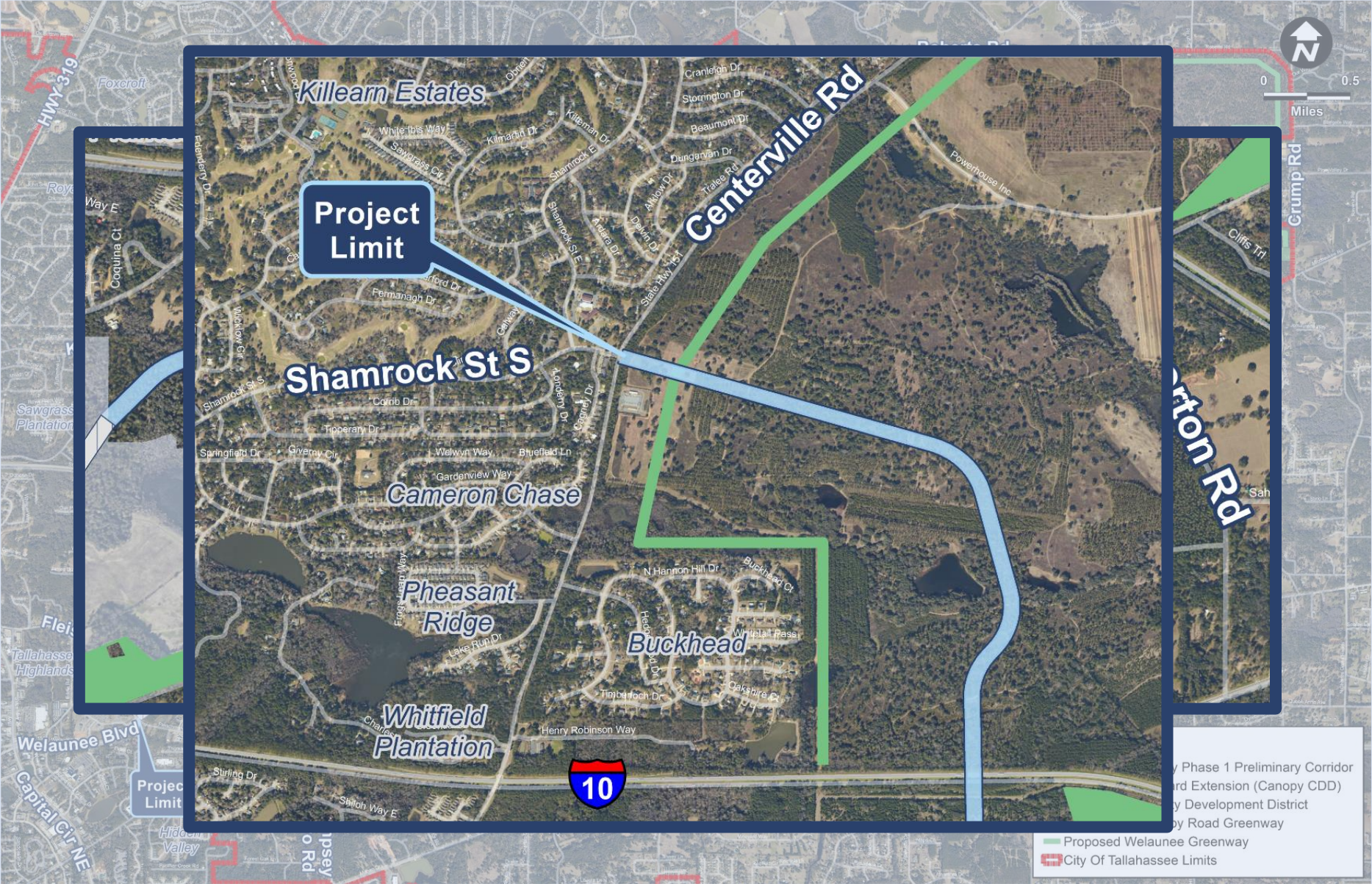


# Project Study Area

Canopy Development

South of I-10

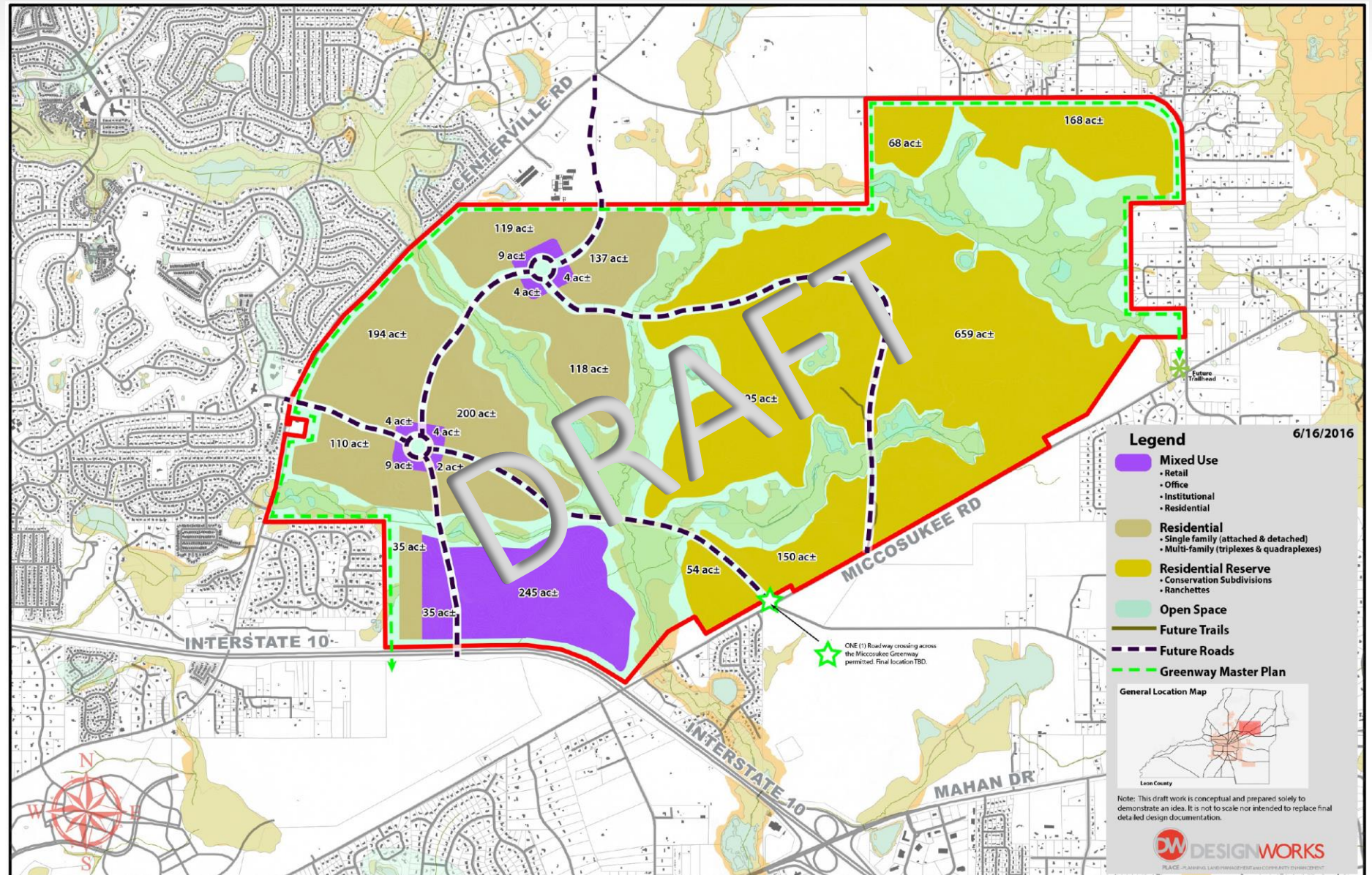
North of I-10





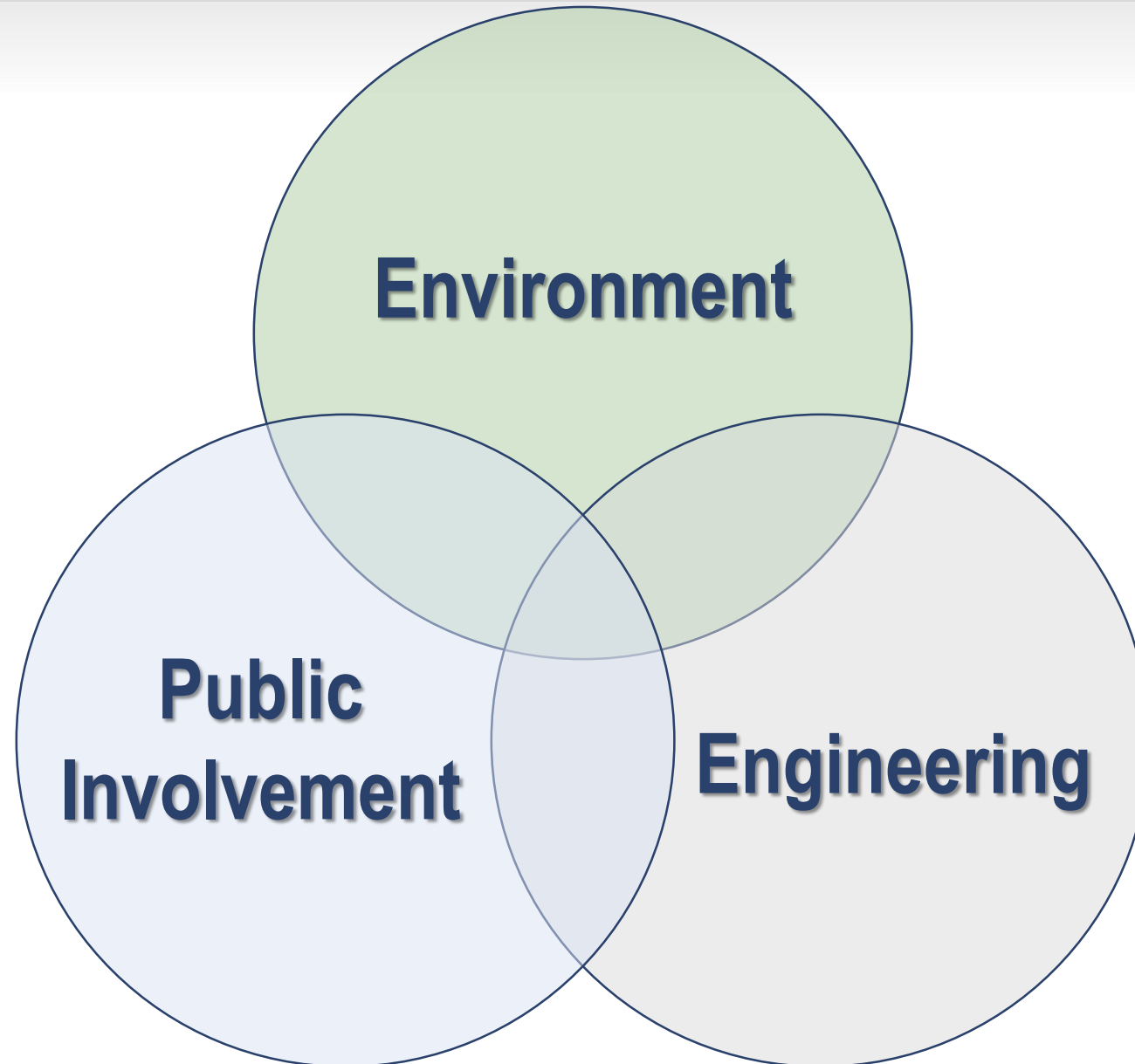
# Welaunee North of I-10 Proposed Land Use Change

7



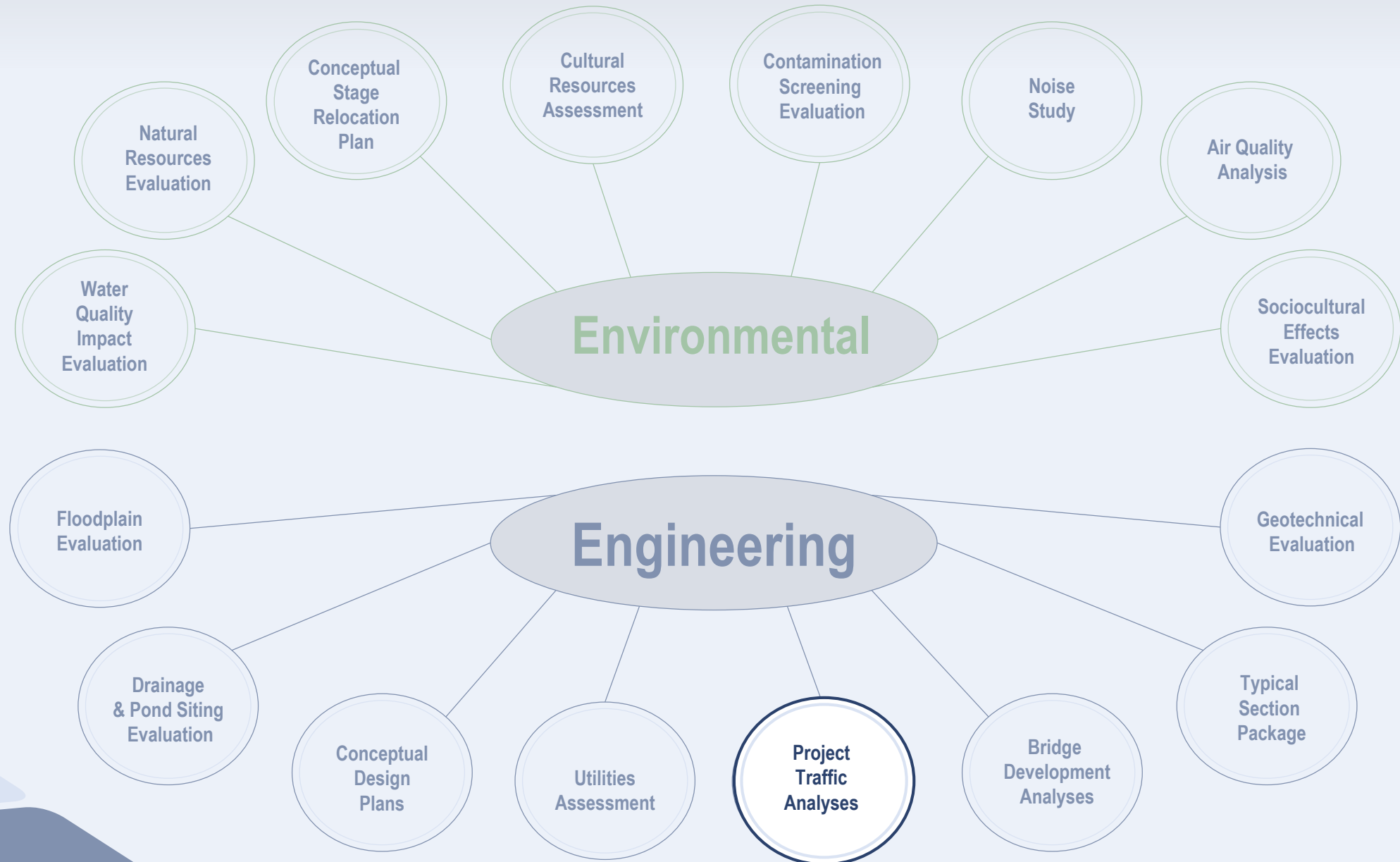


# 3 Components of a PD&E Study





# Scope of Services



# Project Traffic Analyses

- ☒ Collect data for daily, AM peak, and PM peak traffic conditions
- ☐ Forecast traffic for Opening Year 2024 and Design Year 2045
- ☐ Evaluate No Build, Build, and Transportation Systems Management and Operations (TSM&O) alternatives
- ☐ Conduct safety analyses



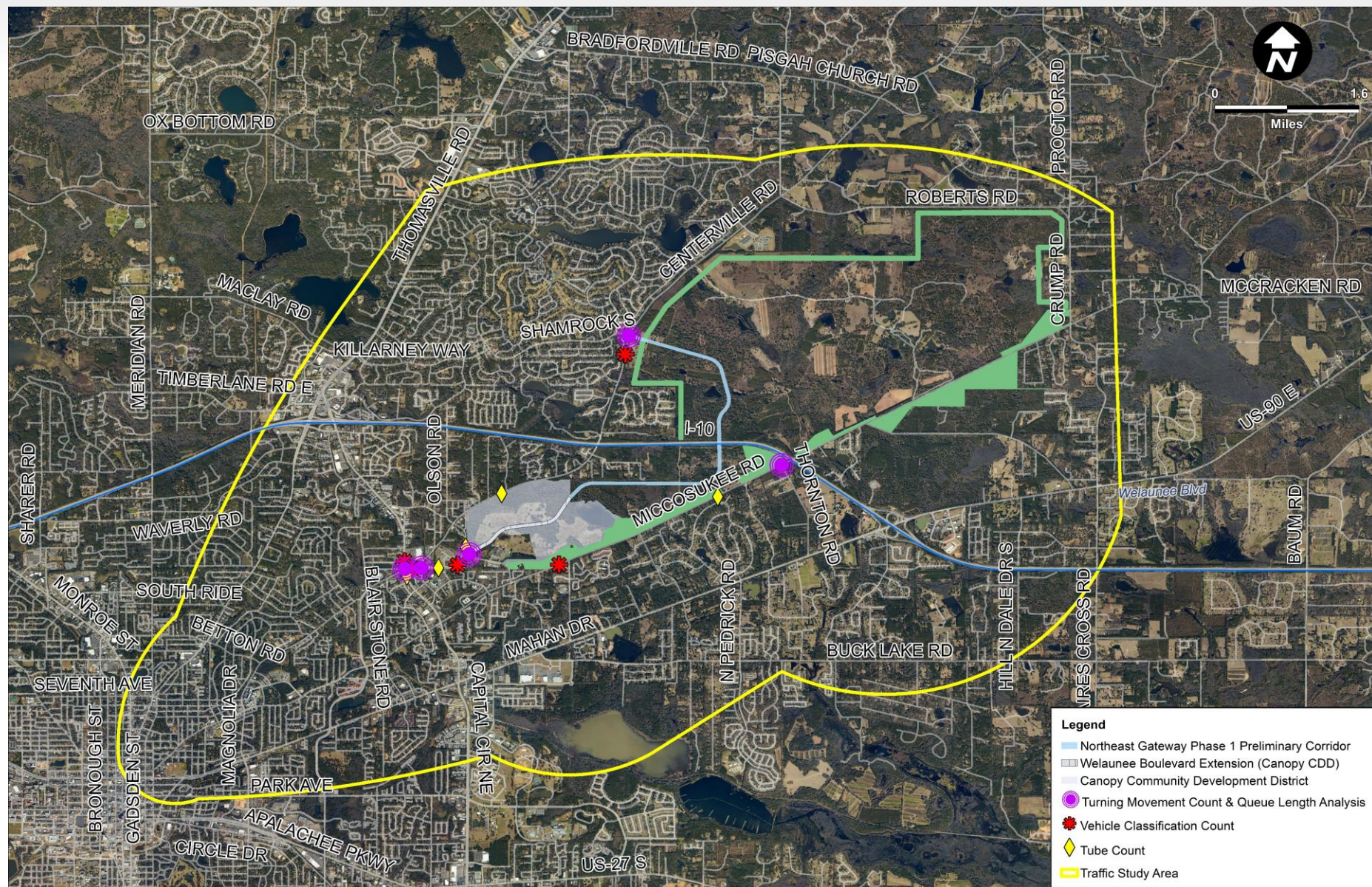


# Project Traffic Data Collection



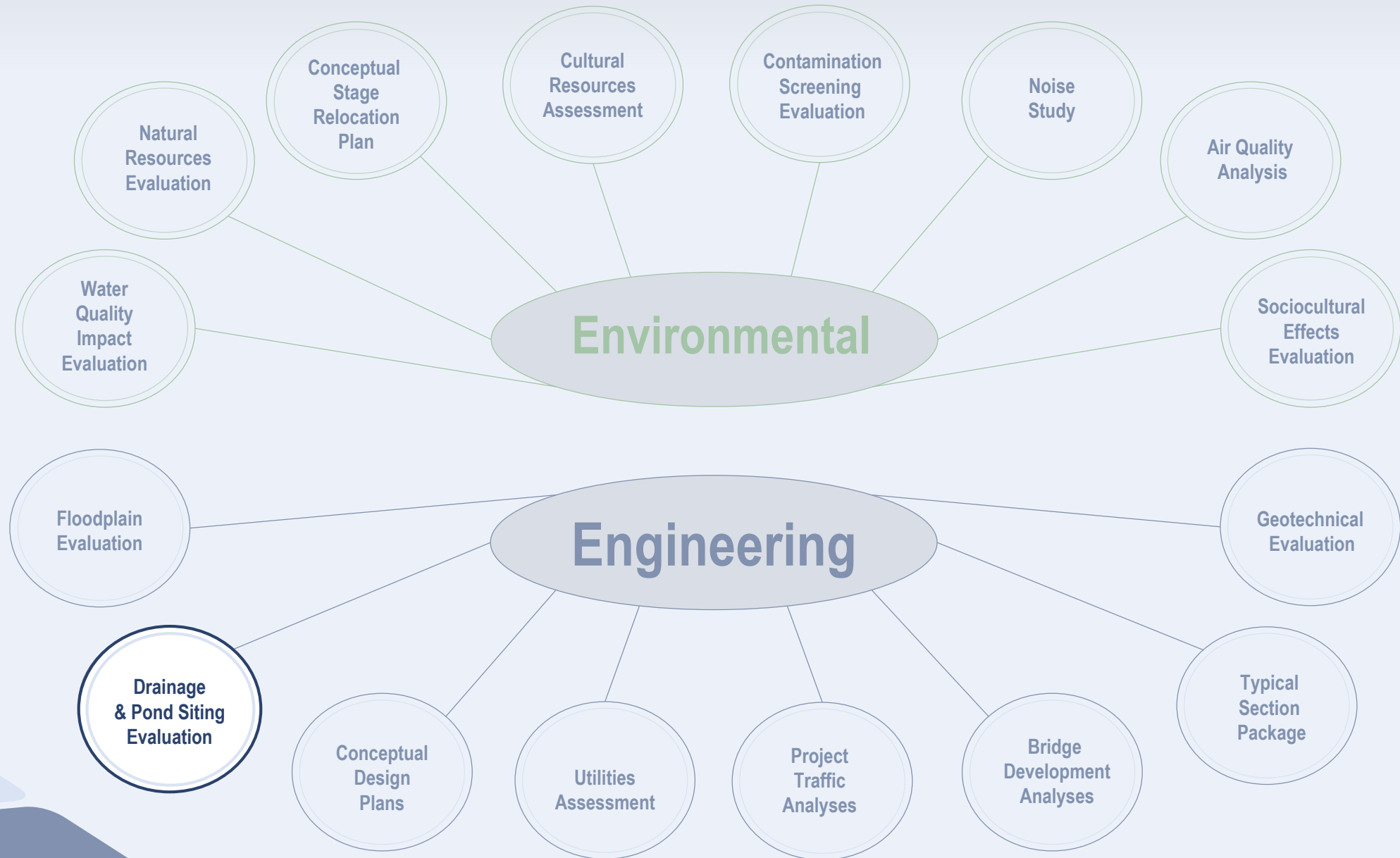


# Project Traffic Analysis Area





# Scope of Services



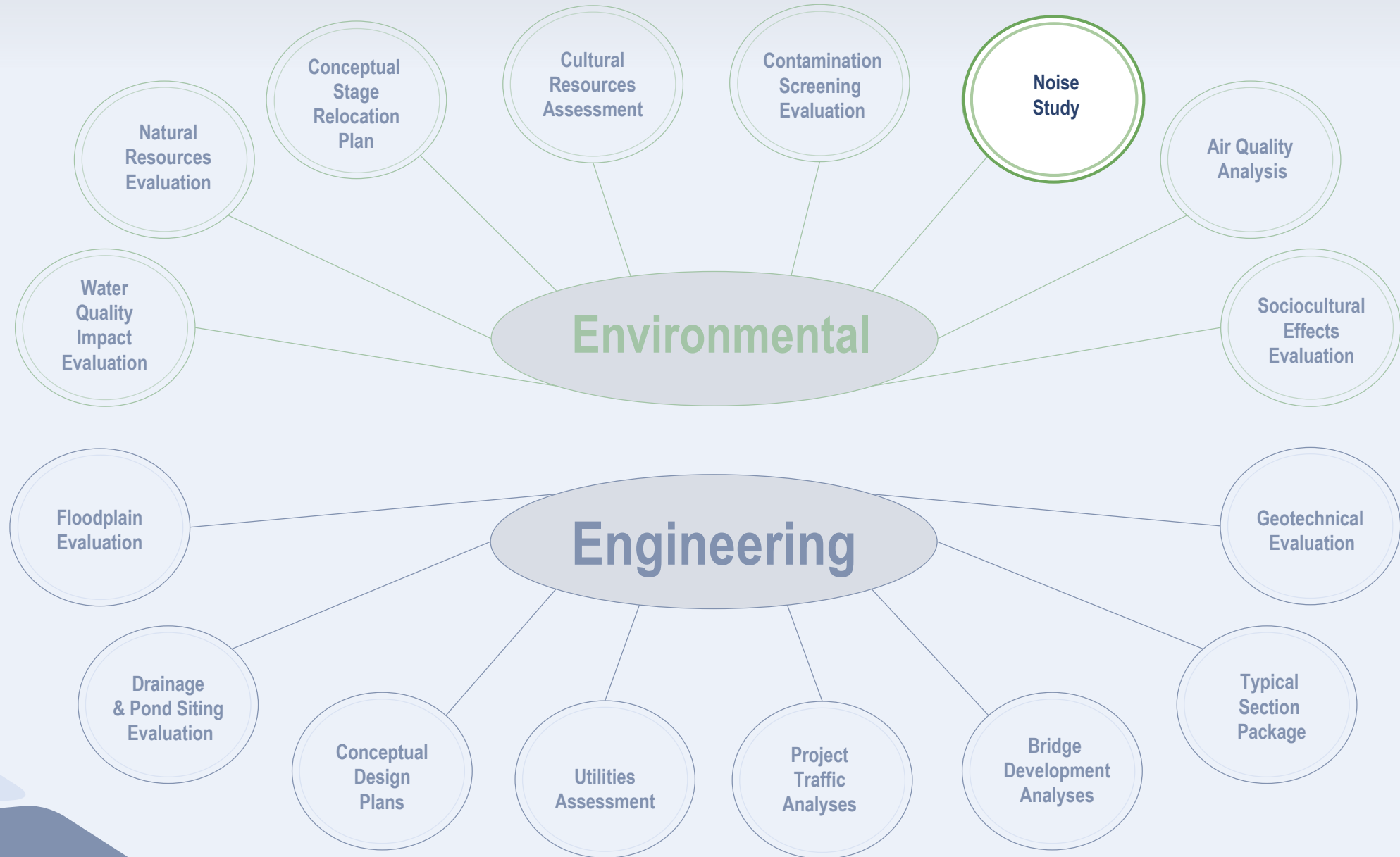


# Drainage and Pond Siting Evaluation

- ☐ Develop drainage concepts
- ☐ Identify potential pond site locations
- ☐ Identify and evaluate environmental impacts
- ☐ Review permitting requirements



# Scope of Services



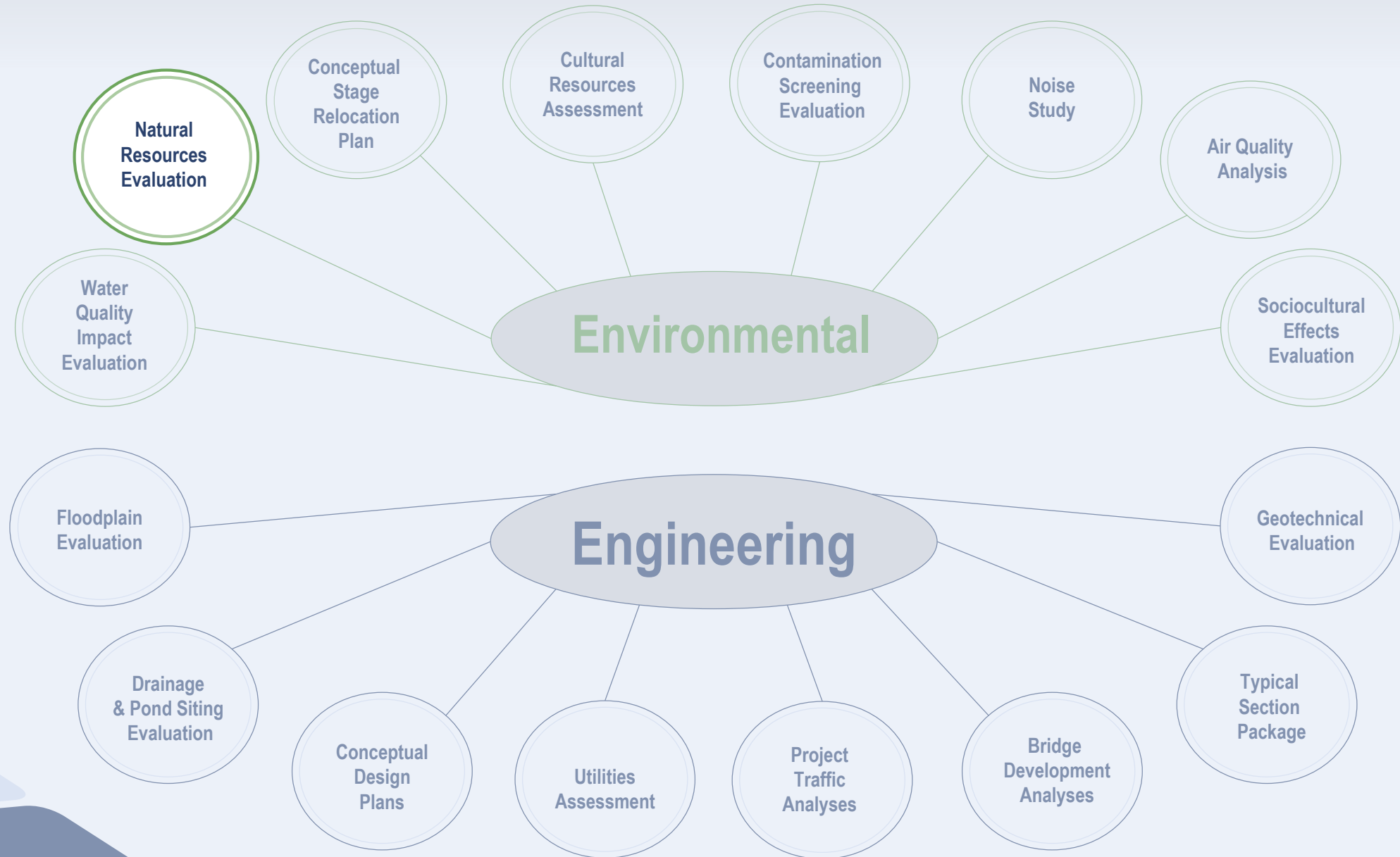


# Noise Study

- ☐ Evaluate existing and projected future noise
  - ☐ Construction-based
  - ☐ Traffic-based
- ☐ Identify noise abatement measures, as necessary
- ☐ Evaluate noise abatement
  - ☐ Reasonable
  - ☐ Feasible
- ☐ Auxiliary noise study



# Scope of Services





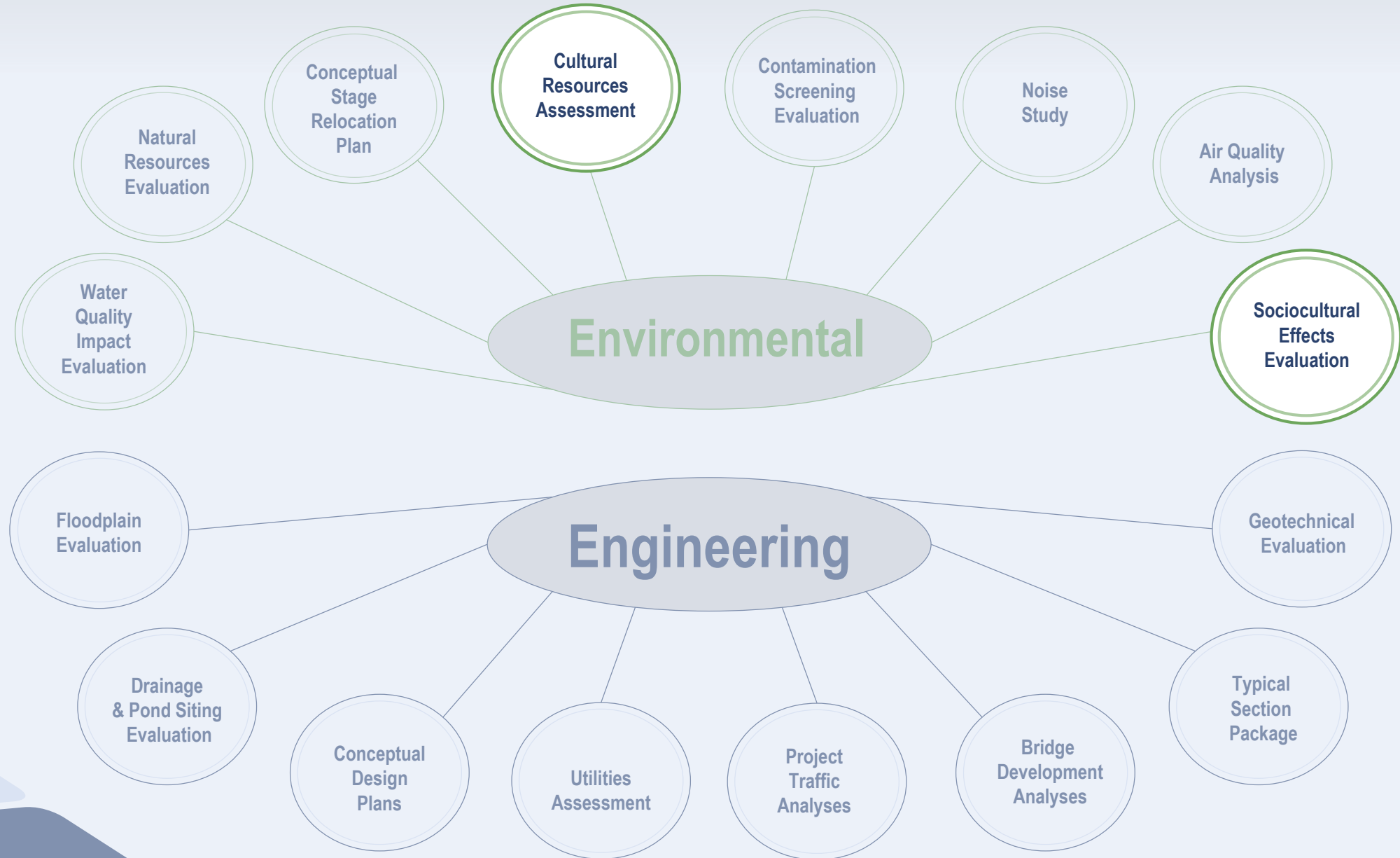
# Natural Resources Evaluation

- ☐ Evaluate the environmental impacts of all alternatives
- ☐ Identify protected species and habitats
- ☐ Identify wetlands and surface waters
- ☐ Evaluate avoidance strategies and mitigation options





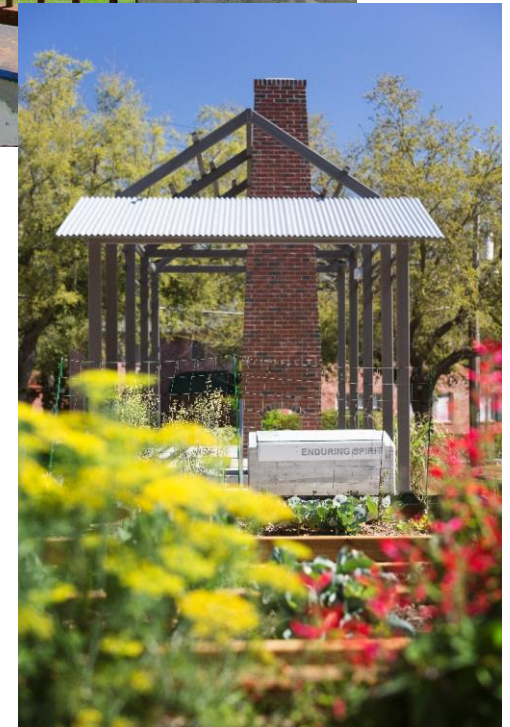
# Scope of Services



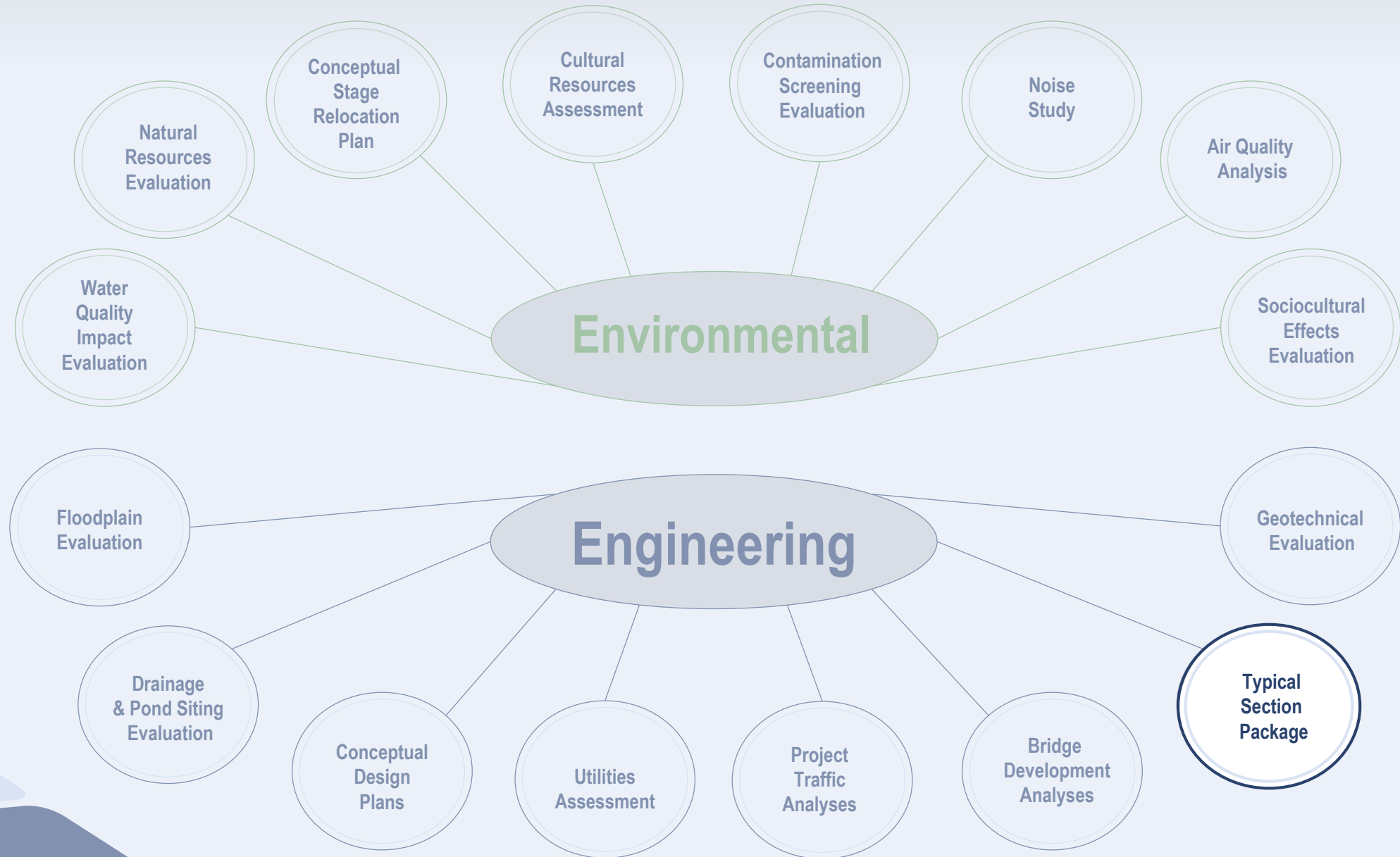


# Cultural Resources & Sociocultural Effects

- ☐ Conduct archaeological survey
- ☐ Conduct architectural survey
- ☐ Evaluate sites for eligibility in the National Register of Historic Places
- ☐ Assess direct, indirect, and cumulative sociocultural effects

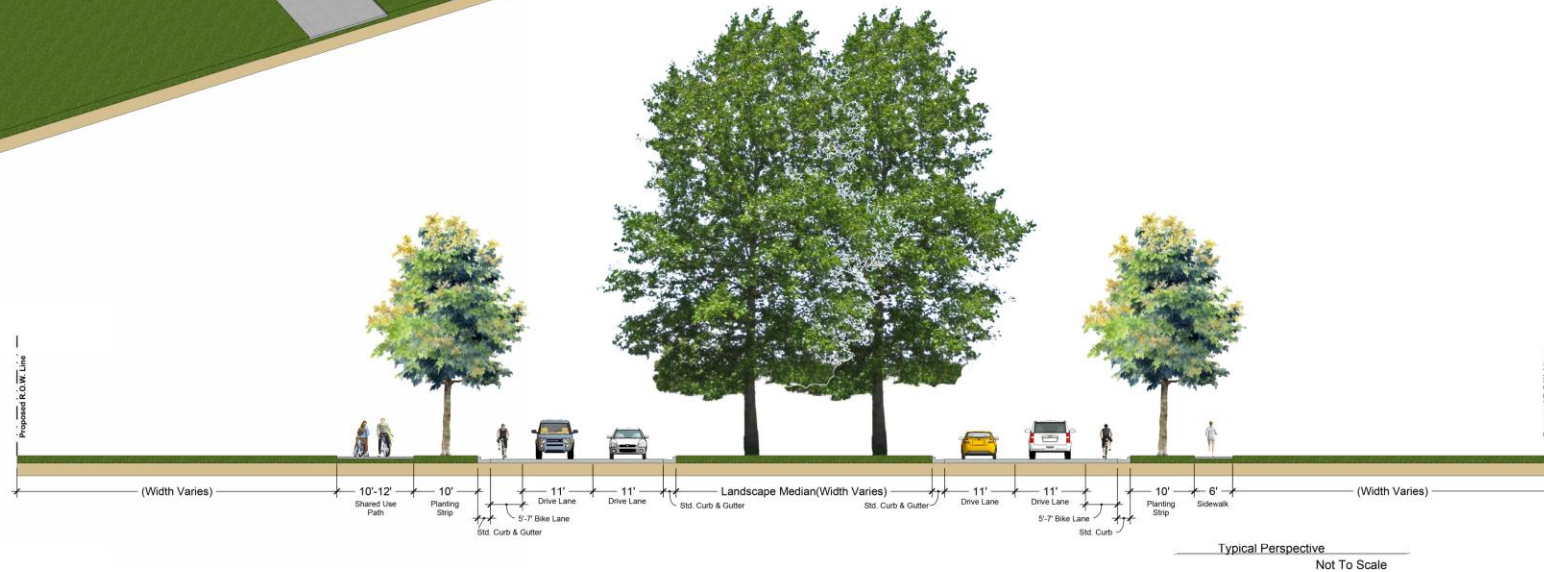


# Scope of Services

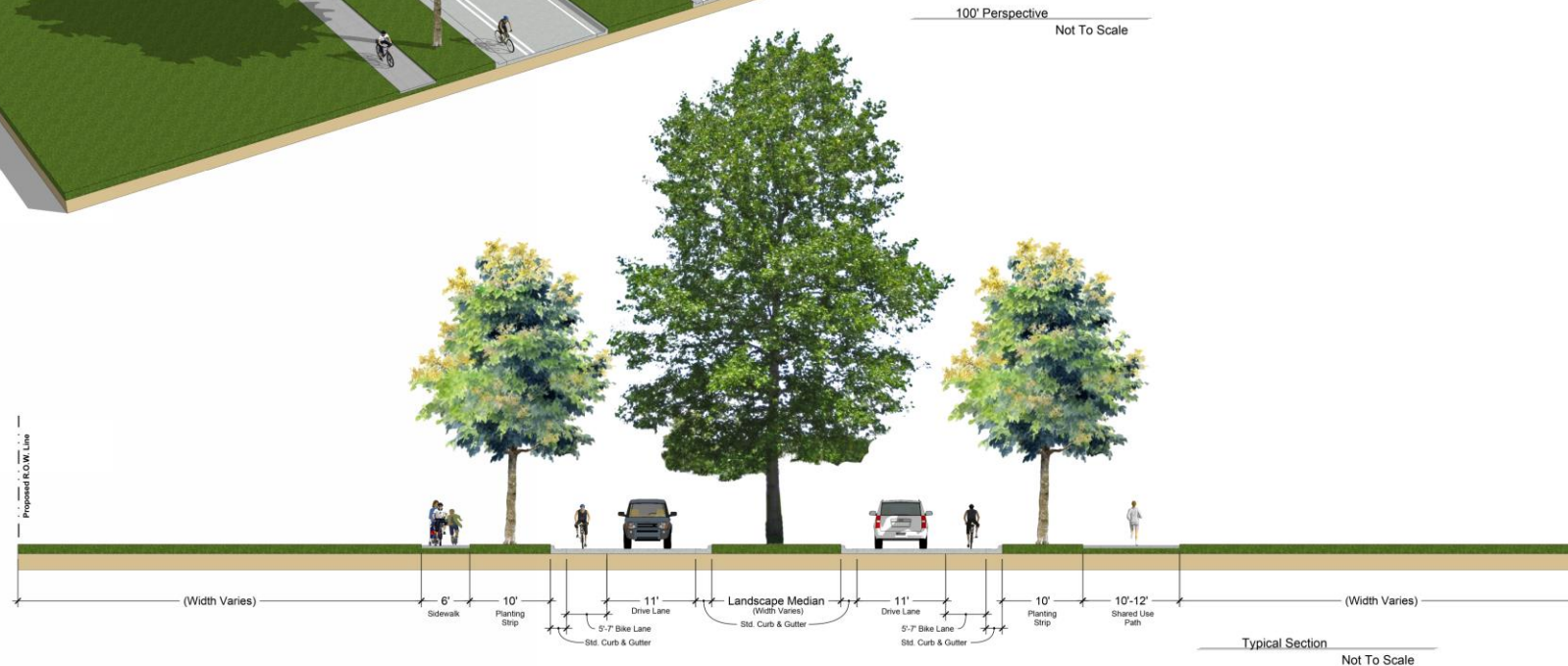




# Welaunee Boulevard Typical Section



# Shamrock Street Extension Typical Section



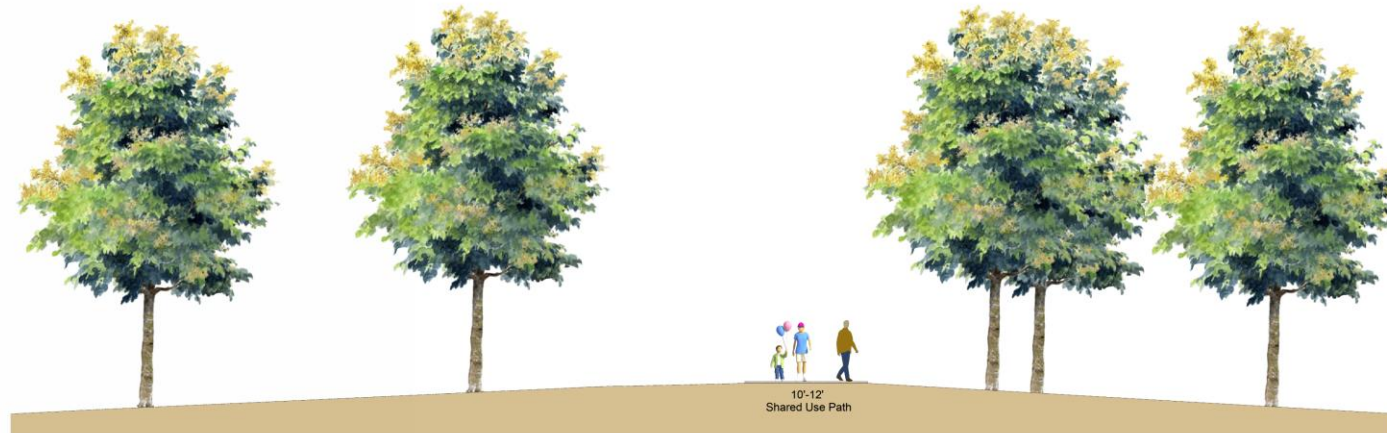


# Welaunee Greenway Typical Section



100' Perspective

Not To Scale



Typical Section

Not To Scale

# Project Schedule

We are here →





# Community Engagement

**Alternatives Public Meeting**  
Fall 2019

**Public Hearing**  
Spring 2020

**Other Informal Meetings & Briefings**  
Ongoing



# Other Informal Meetings & Briefings

- City of Tallahassee
- Leon County
- Capital Region Transportation Planning Agency (CRTPA)
- Florida Department of Transportation (FDOT)
- Neighborhood associations
- Adjacent property owners
- Permitting agencies
- And others





# Community Engagement

**Alternatives Public Meeting**  
Fall 2019

**Public Hearing**  
Spring 2020

**Other Informal Meetings & Briefings**  
Ongoing



# Contact Us

For more information regarding the project, please contact:

**Greg Kern, AICP**

Project Manager

Blueprint Intergovernmental Agency

315 S. Calhoun Street

Tallahassee, Florida 32301

(850) 219-1060

[Greg.Kern@BlueprintIA.org](mailto:Greg.Kern@BlueprintIA.org)

**Susan Emmanuel**

Public Information Officer

Blueprint Intergovernmental Agency

315 S. Calhoun Street

Tallahassee, Florida 32301

(850) 219-1060

[Susan.Emmanuel@BlueprintIA.org](mailto:Susan.Emmanuel@BlueprintIA.org)

Or visit the project website at  
**[NEGateway.com](http://NEGateway.com)**

