

Virtual Community Engagement

Northeast Gateway: Welaunee Boulevard Project Development & Environment Study

Leon County, Florida

February 2021

Blueprint 2020-2040

Your Penny. Your Projects.

- Market District Placemaking
- Midtown Placemaking
- Orange Avenue-Meridian Placemaking
- Beautification & Improvements to the Fairgrounds
- De Soto Winter Encampment
- Bike Route System
- Sidewalks
- Greenway Master Plan
- StarMetro Enhancements
- Florida A&M Entry Points
- Westside Student Corridor Gateway
- Southside Gateway
- Airport Gateway
- Northeast Connector Corridor
- College Avenue Placemaking
- Lake Lafayette and St Marks Linear Park
- Monroe-Adams Corridor Placemaking
- North Monroe Gateway
- Northeast Gateway
- Tallahassee-Leon Community Animal Service Center
- Northeast Park
- Operating Costs for Parks Built with Penny Sales Tax Funds
- Alternative Sewer Solutions Study
- Water Quality & Stormwater Improvements
- Livable Infrastructure For Everyone (L.I.F.E.) Projects
- Economic Development
- Capital Circle Southwest
- Northwest Connector Corridor
- Orange Avenue Widening From Adams Street to Springhill Road

2020-2040
\$1.2 Billion Economic Impact
27 projects identified
12% toward Economic Vitality

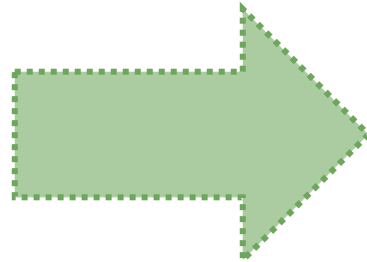
SUMMARY MAP



Format for Virtual Activities

Group Presentation

- NE Gateway Project Background
- Project Update
- Public Engagement



Virtual Breakout Discussions

- Opportunity to talk one-on-one with project team
- Share questions and/or concerns
- **Times:**
 - Wednesday, February 24th
 - 11:30 a.m. to 1:00 p.m.
 - Thursday, February 25th
 - 6:00 p.m. to 7:30 p.m.

Q&A Breakout Session Topics

- Intersection Operations at Bradfordville Road, Centerville Road, and Roberts Road
- Intersection Operations at Centerville Road and Shamrock Street South
- Welaunee Greenway
- Northeast Area Planning

***Note:** Please feel free to call or email questions, comments, or concerns at any time in the project process. All project team member contact information can be found at NEGateway.com

Northeast Gateway Project Purpose and Need

PURPOSE

- Improve regional mobility
- Enhance connectivity for motorized and non-motorized users
- Reduce traffic congestion on adjacent roadways

NEED

- Provide an alternative route for existing users of Centerville and Miccosukee Roads
- Support ongoing and proposed development of the 7,000-acre Welaunee Critical Area Plan
- Provide relief to US 319 (Thomasville Road) and US 90 (Mahan Drive)

Project Schedule – PD&E



Northeast Gateway: Welaunee Boulevard Project Development and Environment Study

	2018		2019												2020												2021					
	NOV	DEC	JAN	FEB	MAR	APR	MAY	JUN	JUL	AUG	SEP	OCT	NOV	DEC	JAN	FEB	MAR	APR	MAY	JUN	JUL	AUG	SEP	OCT	NOV	DEC	JAN	FEB	MAR	APR	MAY	
Begin PD&E Study	☆																															
Preliminary Concept Development																																
Data Collection																																
Public Kick-Off Meeting																																
Blueprint IA Board Meeting																																
Traffic Modeling Efforts																																
Traffic Modeling Information Session																																
Virtual Community Update and Engagement																																
Environmental Studies																																
Concept Refinement																																
Public Hearing																																
Finalize Project Documentation																																
Location and Design Concept Acceptance																																
PD&E Study Complete																																

☆ = PD&E Study Begin/End 🗨️ = Public Meeting 🎤 = Public Hearing 🏛️ = Blueprint IA Board Meeting

30 Years of **planning** that led to the Northeast Gateway project

2014 Blueprint 2020 **approved** by voters including the Northeast Gateway project

March 2019 Northeast Gateway PD&E Study **Public Kick-Off Meeting** held



Public Kick-Off Meeting

- Held on March 11, 2019
- Outreach
 - 958 mailouts to nearby property owners
 - 104 mailouts to residents
 - 119 emails to elected officials/key staff/stakeholders
 - 7 mailouts to Native Americans



- Response
 - 288 Attendees
 - 51 comment forms received at meeting
 - 9 comment forms received post-meeting



30

Years of planning that led to the Northeast Gateway project

2014

Blueprint 2020 **approved** by voters including the Northeast Gateway project

March
2019

Northeast Gateway PD&E Study **Public Kick-Off Meeting** held

March
- Nov.
2019

Community **feedback** received and reviewed

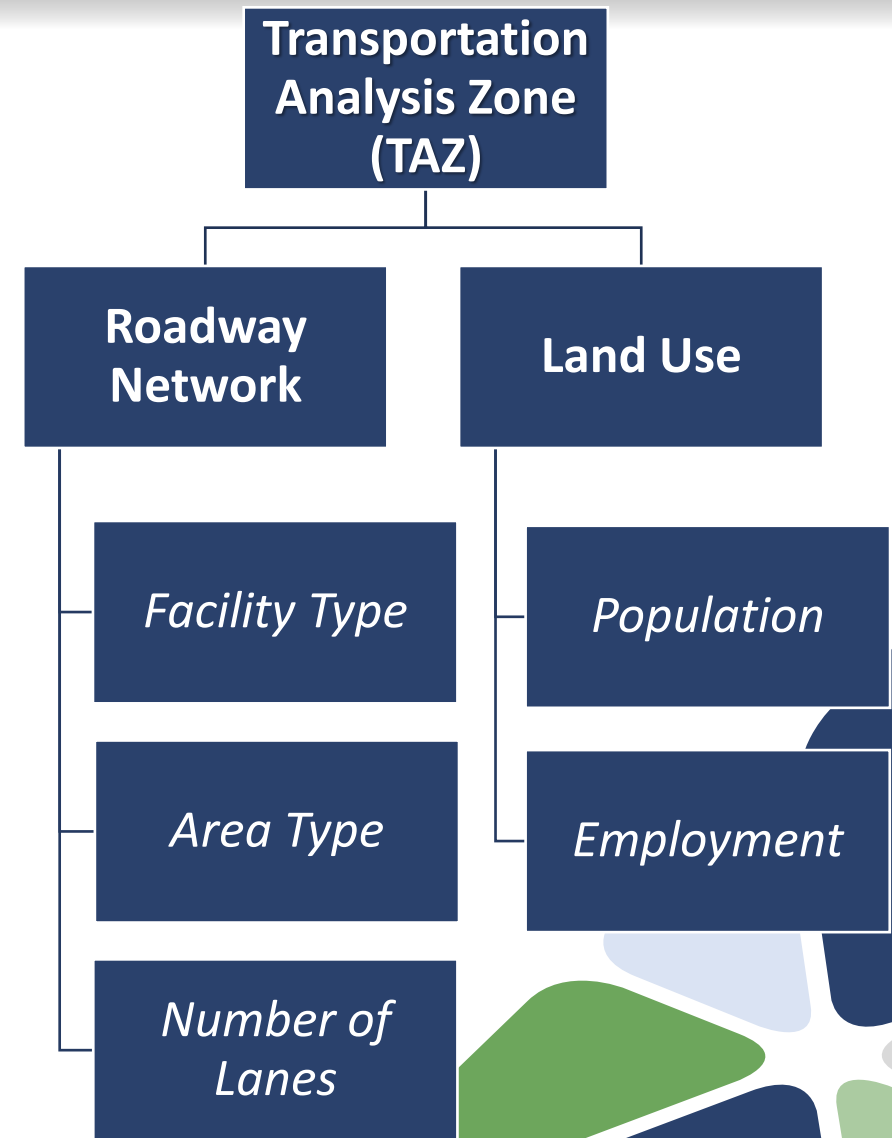
Sept.
2019

Blueprint IA Board provided direction to advance **alternatives evaluation**



Traffic Modeling

- Planning tool that utilizes computer programs to replicate real-world **travel patterns** and **forecasts future travel needs**.
- Includes elements within a Transportation Analysis Zone (TAZ).
- Operates based on the assumption that a trip will default to the **quickest** and **most direct route** to its destination based on travel time and roadway characteristics.



- **More than a dozen corridors** were initially **screened**, which included various connections north of I-10 as well as additional potential future roads.
- Corridor opportunities were narrowed down to **5** feasible first phase corridors and evaluated in year **2025, 2035, and 2045**.

The **Capital Region Transportation Planning Agency (CRTPA) Travel Demand Model** was used to perform the traffic modeling. The model and modeling inputs used in this evaluation underwent an **independent peer review** as part of this process.

- Regional Mobility
- Relief to Canopy Roads
 - Centerville Road
 - Miccosukee Road
- Relief to Primary Roads
 - Thomasville Road
 - Mahan Drive
- Potential to support a future I-10 interchange

PURPOSE

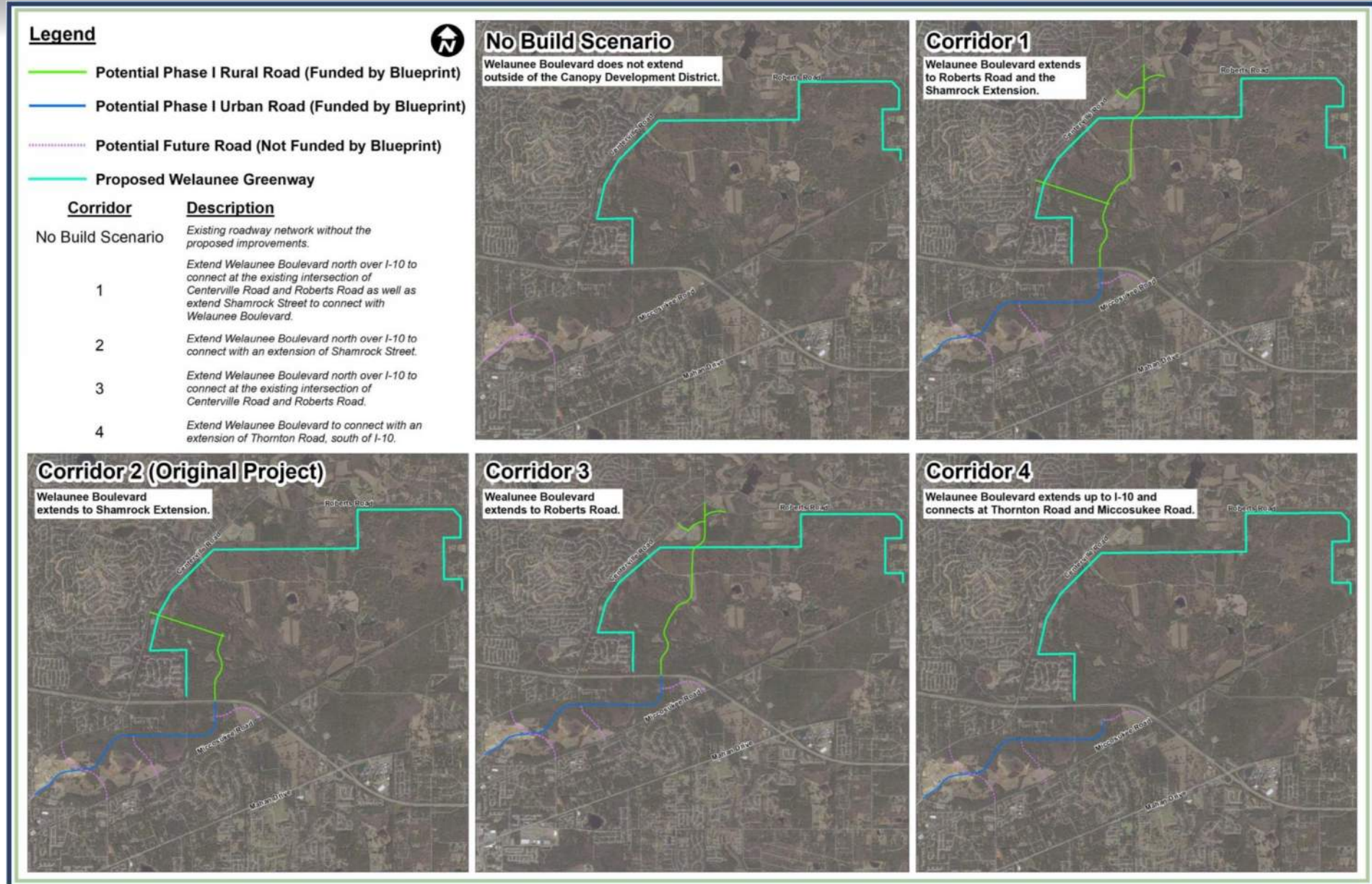
- ✓ Improve regional mobility
- ✓ Enhance connectivity for motorized and non-motorized users
- ✓ Reduce traffic congestion on adjacent roadways

NEED

- ✓ Provide an alternative route for existing users of Centerville and Miccosukee Roads
- ✓ Support ongoing and proposed development of the 7,000-acre Welaunee Critical Area Plan
- ✓ Provide relief to US 319 (Thomasville Road) and US 90 (Mahan Drive)

Fall 2019 Corridor Alternatives

- Corridor Alternatives presented in Fall 2019
- Presented viable Corridor Alternatives to the Public and IA Board
- Had frequent meetings with Killlearn Homes Association and their Representatives



Traffic Modeling Information Session

- Held on December 3, 2019
- Outreach
 - 2,421 mailouts to nearby property owners
 - 376 mailouts to residents
 - 114 emails to elected officials/key staff/stakeholders
 - 7 mailouts to Native Americans



- Response
 - 151 Attendees
 - 41 comment forms received at meeting
 - 30 comment forms/emails received post-meeting

30 Years of **planning** that led to the Northeast Gateway project

2014 Blueprint 2020 **approved** by voters including the Northeast Gateway project

March 2019 Northeast Gateway PD&E Study **Public Kick-Off Meeting** held

March - Nov. 2019 Community **feedback** received and reviewed

Sept. 2019 Blueprint IA Board provided direction to advance **alternatives evaluation**

Jan. 2020 **Amendment** to the Northeast Gateway project

- Best route for regional transportation needs

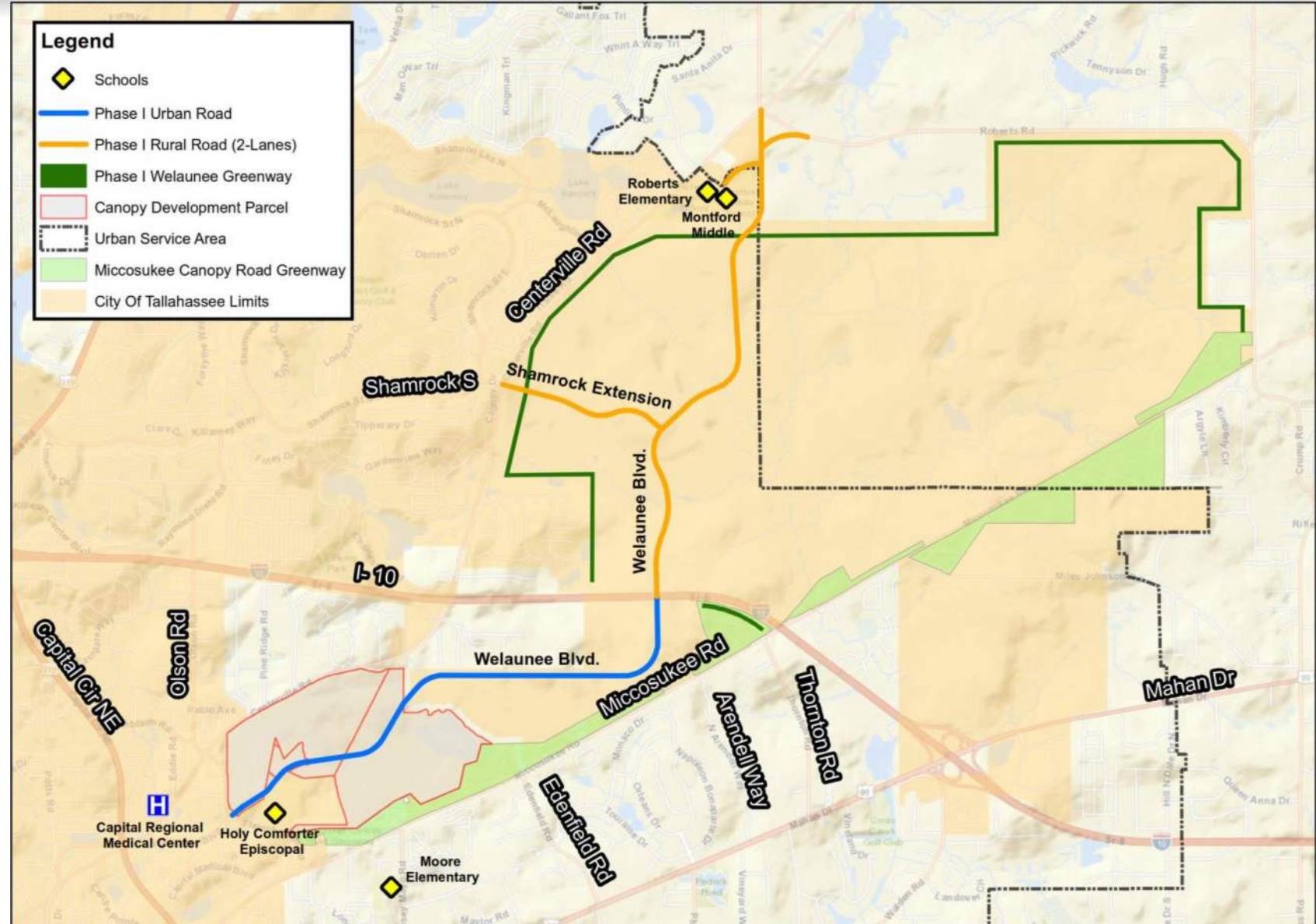


Amended Project

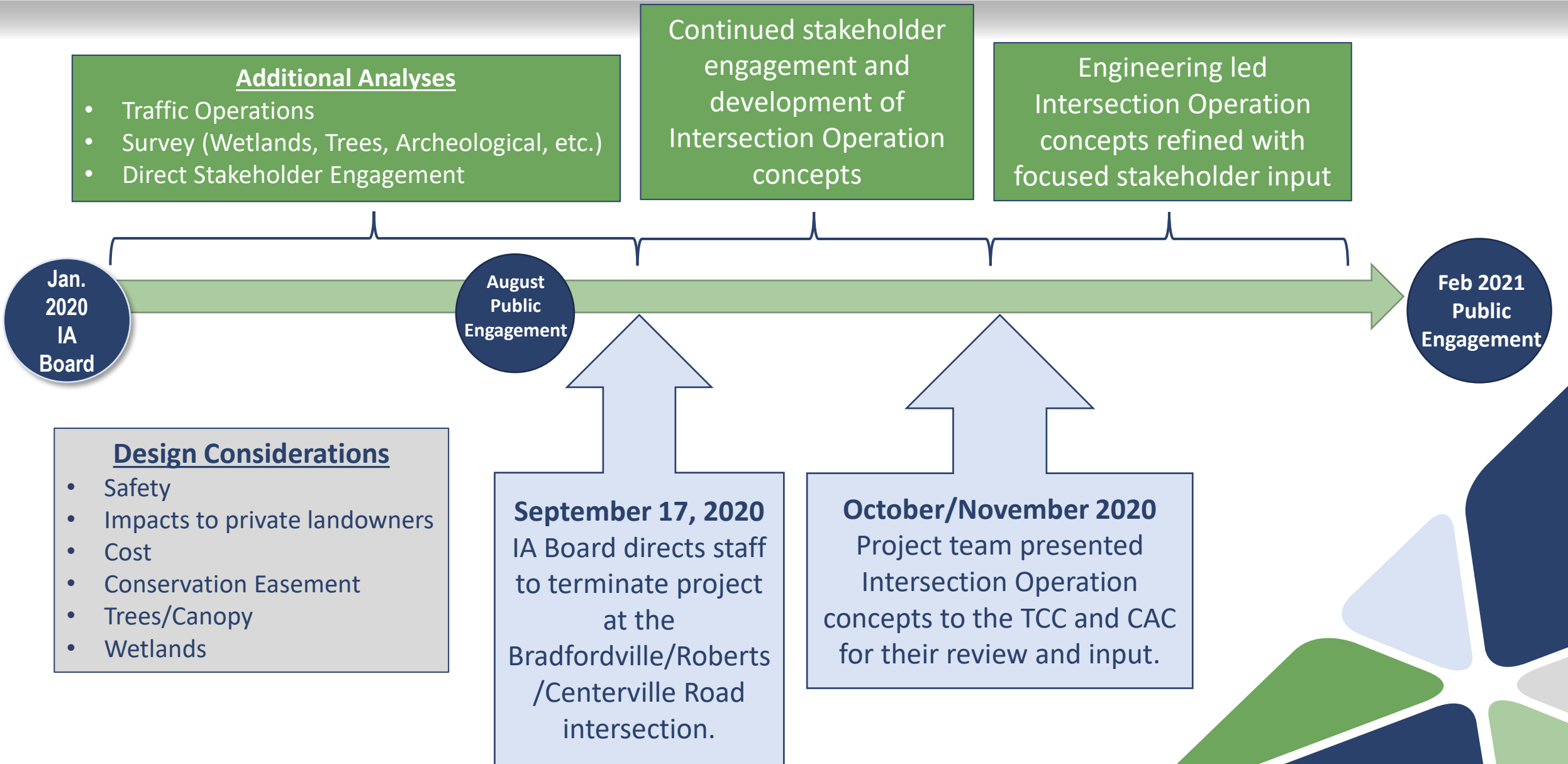
- December 12th, 2019 IA Board directs project team to adopt the modeling corridor connecting to Centerville at Shamrock Street South and Roberts Road.
- Project amended January 30th, 2020.

Features:

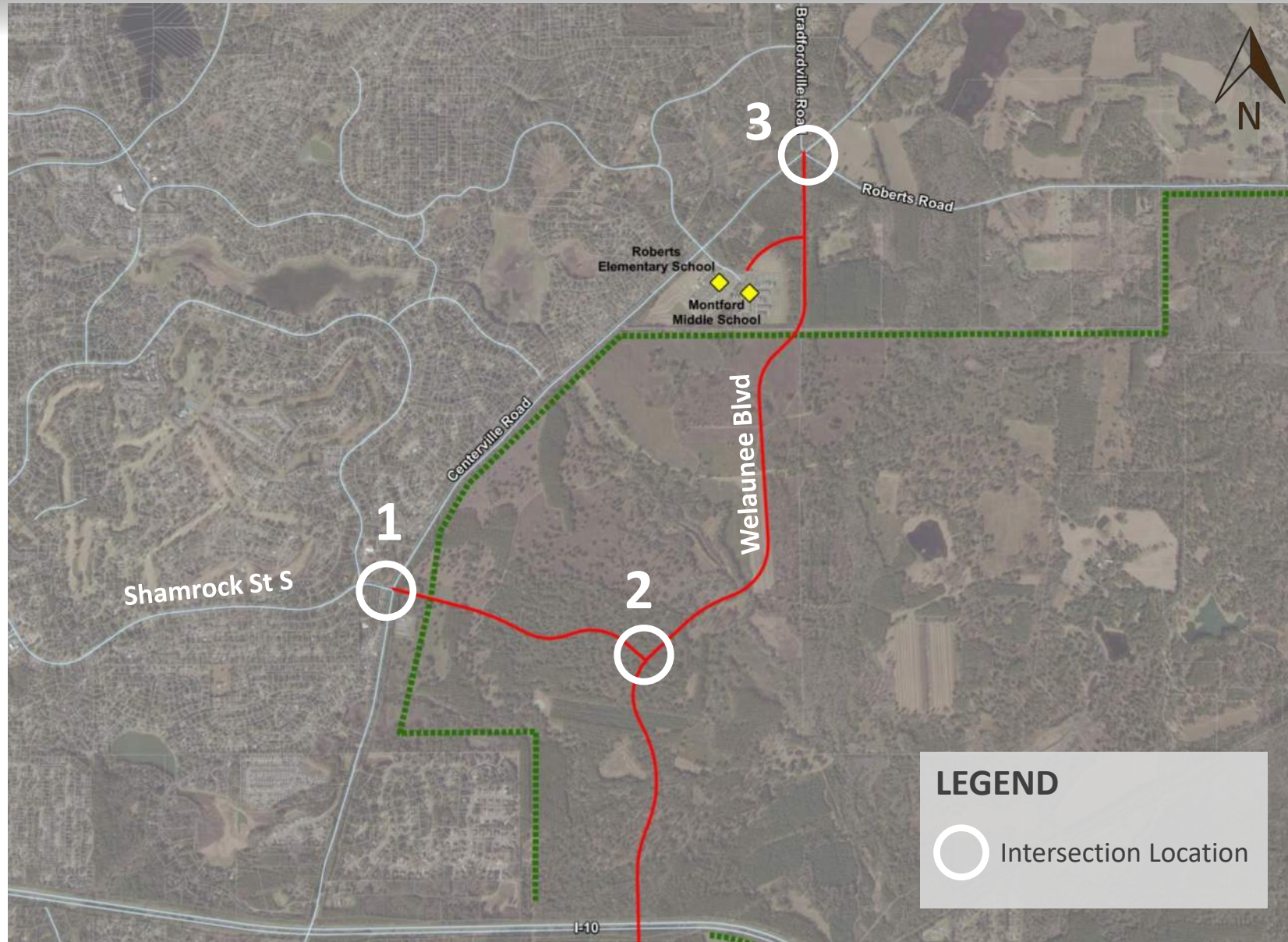
- 2-Lane Urban Facility south of I-10
- 2-Lane Rural Facility north of I-10
- Welaunee Greenway Extension



Amended Project Timeline



Studied Intersections



Welaunee Greenway



- Connect with Miccosukee Greenway
- Create a 17-mile loop
- Breakout Discussion of Trailhead Locations

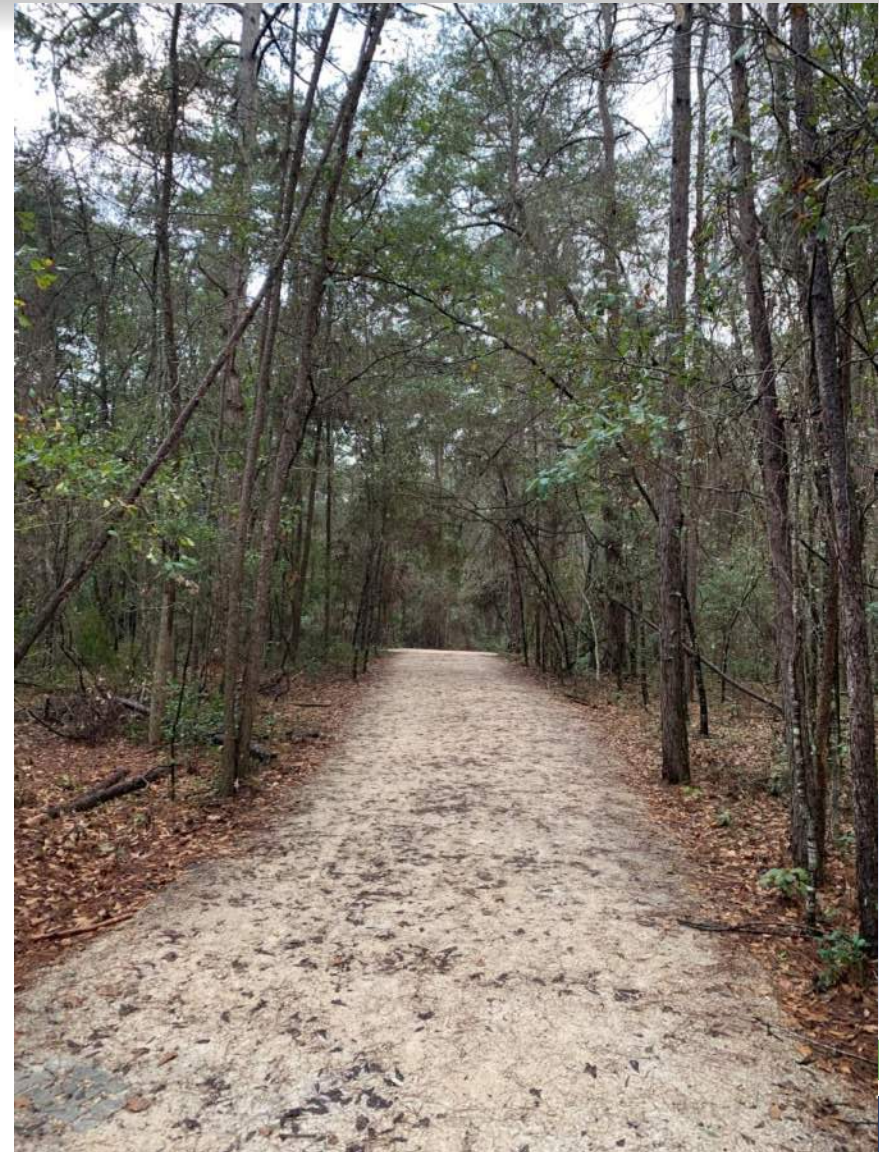


Trail Features

- Natural Surface
- Surrounding Vegetation



Source: floridahikes.com



Source: Provided by Project Team

Trail Features

- Educational Wildlife Viewing Signage
- Rest Stop Benches



Source: epd.org



Source: swa.org



Source: Provided by Project Team

Trailhead Features

- Restrooms
- Water Fountains
- Picnicking
- Pet Waste Stations



Source: Provided by Project Team



Source: Provided by Project Team



Source: polktrails.org



Special Features

- Equestrian Wash Station
- Bicycle Repair Stations



Source: lakecamancheresort.com



Source: westonfl.org

Parking Lots

- Similar to Miccosukee Greenway Edenfield Road Parking Lot
- Equestrian Parking Lot



Source: motherlodetrails.org



Source: Provided by Project Team



Project Schedule – Overall

NE Gateway Project Phases and Timelines

Program	Project	Phase	2020		2021				2022		2023		2024		2025		2026		2027		2028			
			3rd Q	4th Q	1st Q	2nd Q	3rd Q	4th Q	1-6 Mos	7-12 Mos	1-6 Mos	7-12 Mos	1-6 Mos	7-12 Mos	1-6 Mos	7-12 Mos	1-6 Mos	7-12 Mos	1-6 Mos	7-12 Mos	1-6 Mos	7-12 Mos		
	Northeast Gateway Welaunee Boulevard	<i>Planning/Pre-Engineering</i>	█	█	█	█																		
		<i>Design</i>				█	█	█	█	█														
		<i>Right-of-Way Acquisition</i>				█	█																	
		<i>Welaunee Blvd / Shamrock Ext Construction</i>									█	█	█	█	█	█								
		<i>I-10 Interchange Planning</i>									█	█	█											
		<i>I-10 Interchange Design</i>												█	█	█								
		<i>I-10 Interchange Construction</i>															█	█	█	█	█			

Public Engagement – Next Steps

Intergovernmental Agency Board Meeting

April 8, 2021

Public Hearing

May 2021

Other Informal Meetings & Briefings

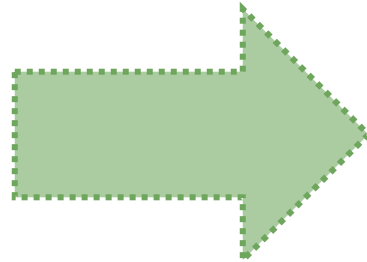
Ongoing

Updates posted to:
NEGateway.com

Format for Virtual Activities

Group Presentation

- NE Gateway Project Background
- Project Update
- Public Engagement



Virtual Breakout Discussions

- Opportunity to talk one-on-one with project team
- Share questions and/or concerns
- **Times:**
 - Wednesday, February 24th
 - 11:30 a.m. to 1:00 p.m.
 - Thursday, February 25th
 - 6:00 p.m. to 7:30 p.m.

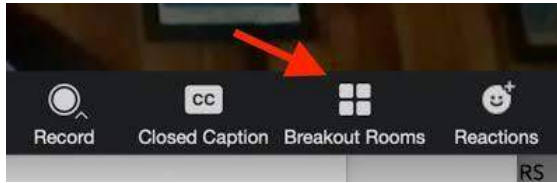
Q&A Breakout Session Topics

- Intersection Operations at Bradfordville Road, Centerville Road, and Roberts Road
- Intersection Operations at Centerville Road and Shamrock Street South
- Welaunee Greenway
- Northeast Area Planning

***Note:** Please feel free to call or email questions, comments, or concerns at any time in the project process. All project team member contact information can be found at NEGateway.com

Breakout Room Instructions

- Click the **Breakout Rooms** option in your meeting controls



- Click **Join** next to the Breakout Room you wish to participate in, then confirm by clicking **Join** again.
- Repeat as necessary to join other breakout rooms, or click **Leave Room** to return to the main session.



**Thank You For Your
Participation.**