



# WELCOME

WELCOME

TO THE

## NORTHEAST GATEWAY: WELAUNEE BOULEVARD

PROJECT DEVELOPMENT AND ENVIRONMENT STUDY

# PUBLIC HEARING

WEDNESDAY, MAY 26, 2021

OPEN HOUSE - 5:30 PM (EDT)  
FORMAL PRESENTATION - 6:00 PM (EDT)  
PUBLIC COMMENTS TO FOLLOW

ROBERTS ELEMENTARY SCHOOL  
TALLAHASSEE, FLORIDA





Blueprint Intergovernmental Agency  
Complies with Various

**Non-Discrimination Laws and  
Regulations Including  
Title VI of the Civil Rights Act of 1964**

*Public Participation is solicited without regard  
to race, color, national origin, age, sex,  
religion, disability or family status.*

Persons wishing to express concerns  
about Title VI may do so by contacting:

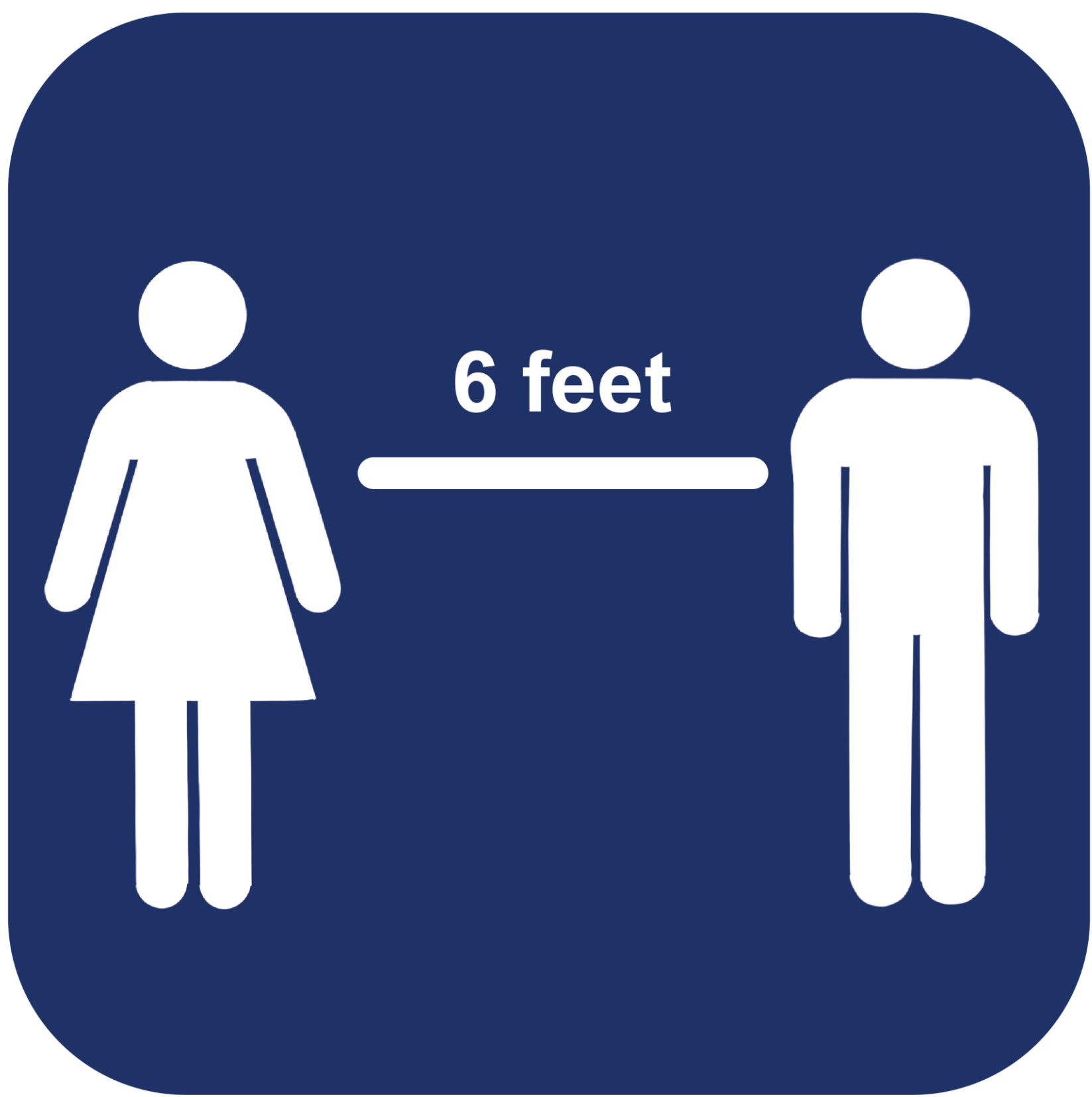
Susan Emmanuel  
Public Information Officer  
Blueprint Intergovernmental Agency  
315 S. Calhoun Street  
Tallahassee, Florida 32301  
(850) 219-1060



For your safety and the  
safety of other guests:



Wear a Face Covering  
at all times

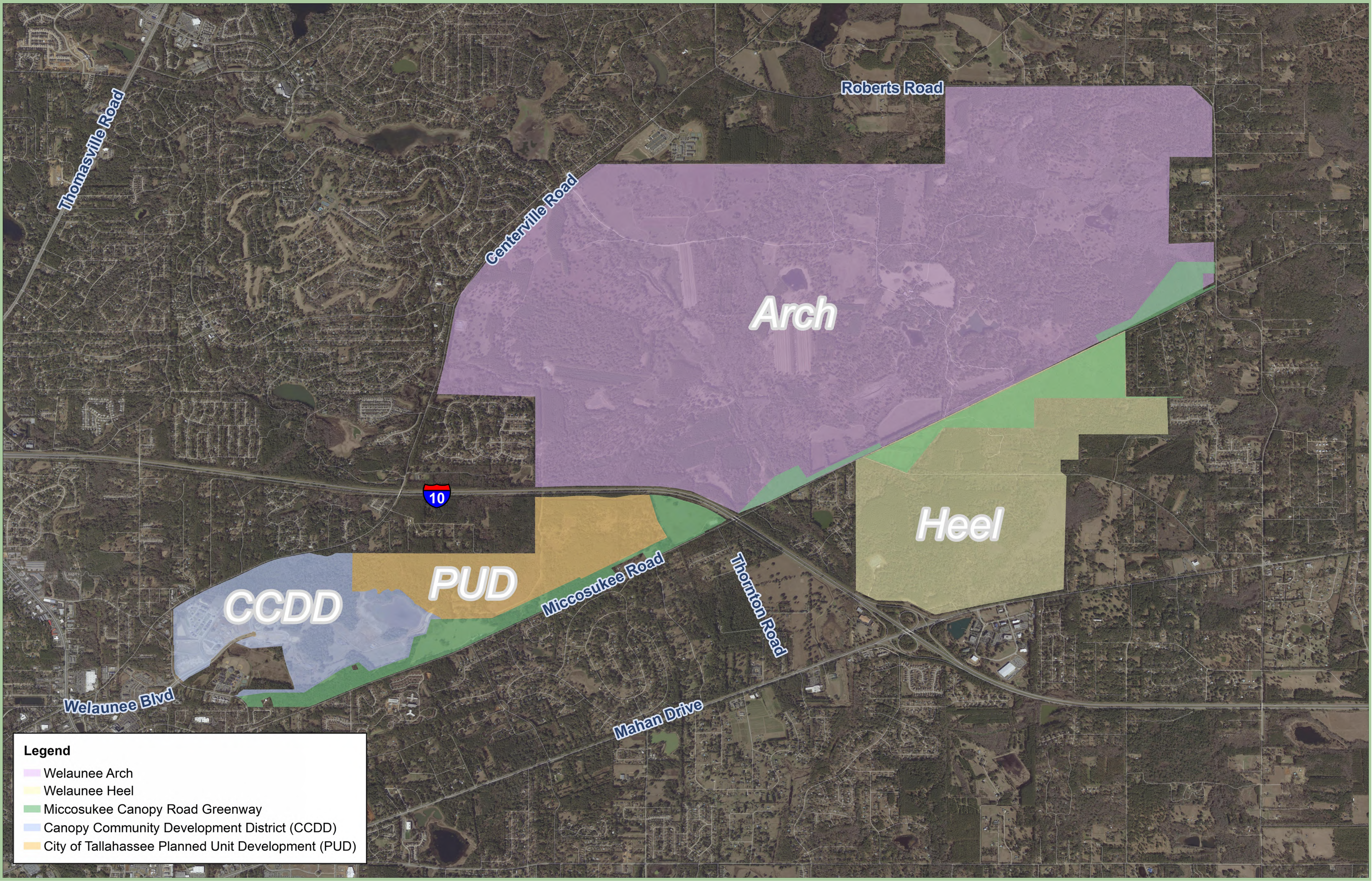


Maintain Physical  
Distancing

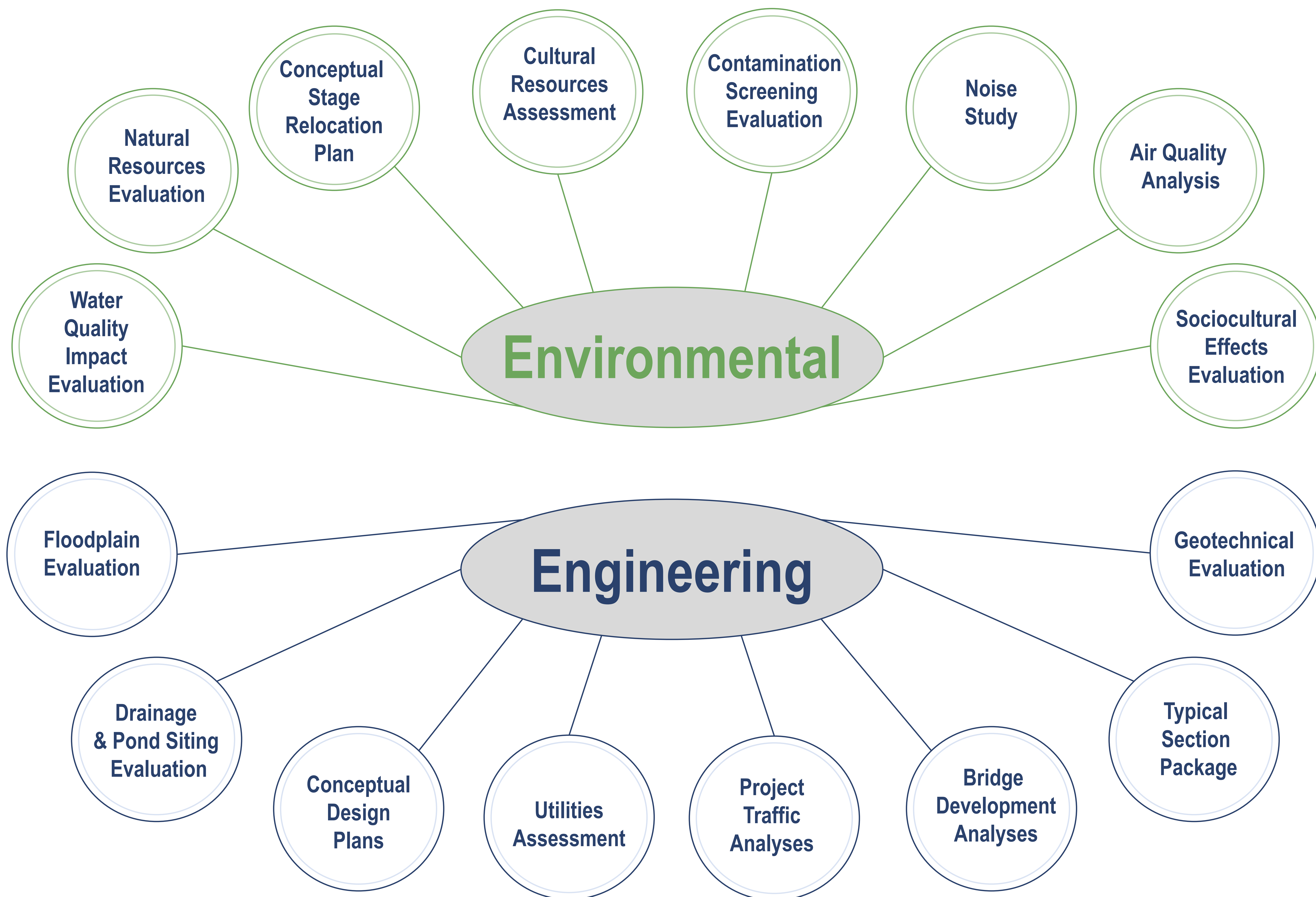


Wash your hands often with  
soap and water or with  
alcohol-based hand sanitizer

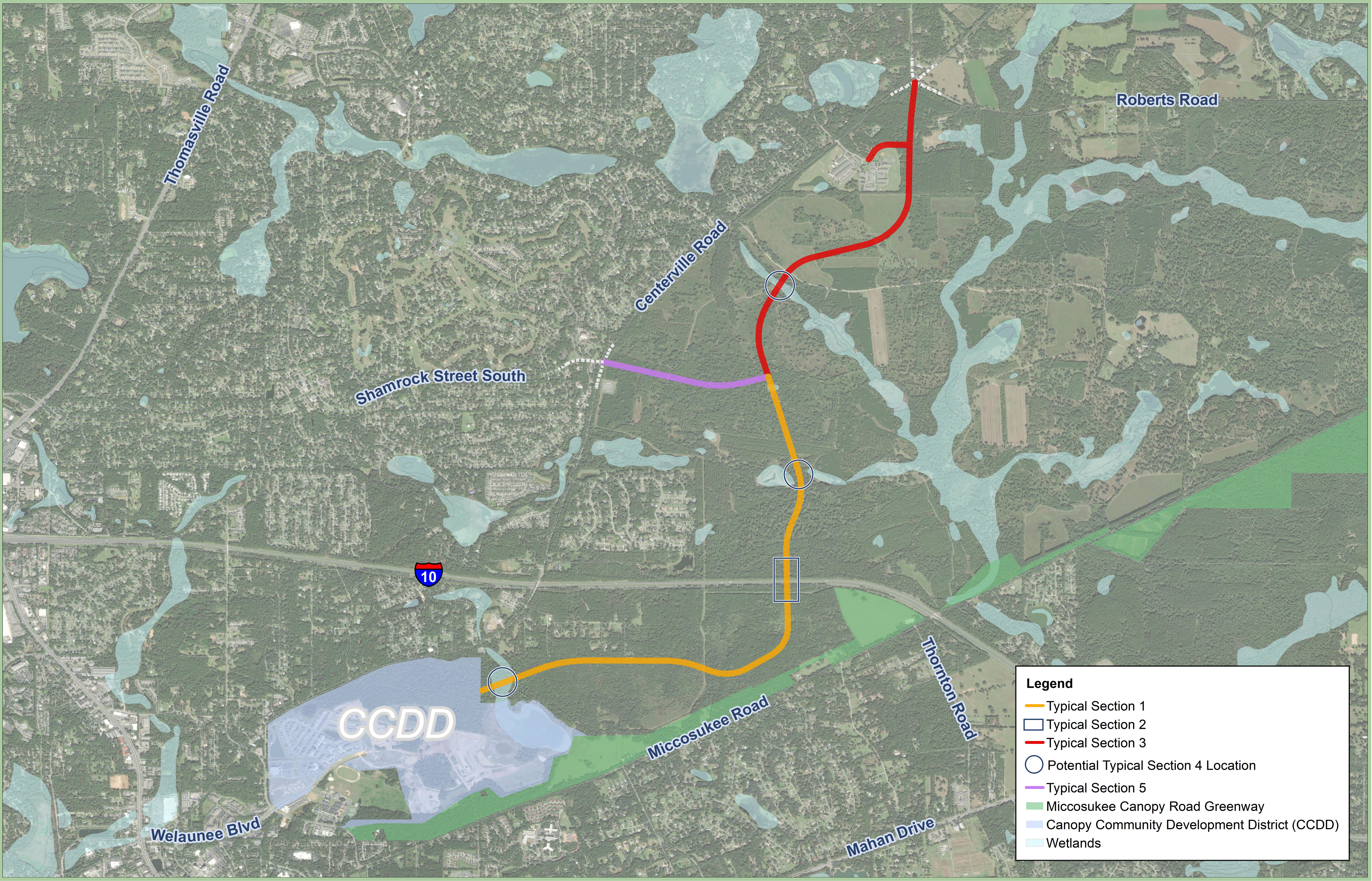












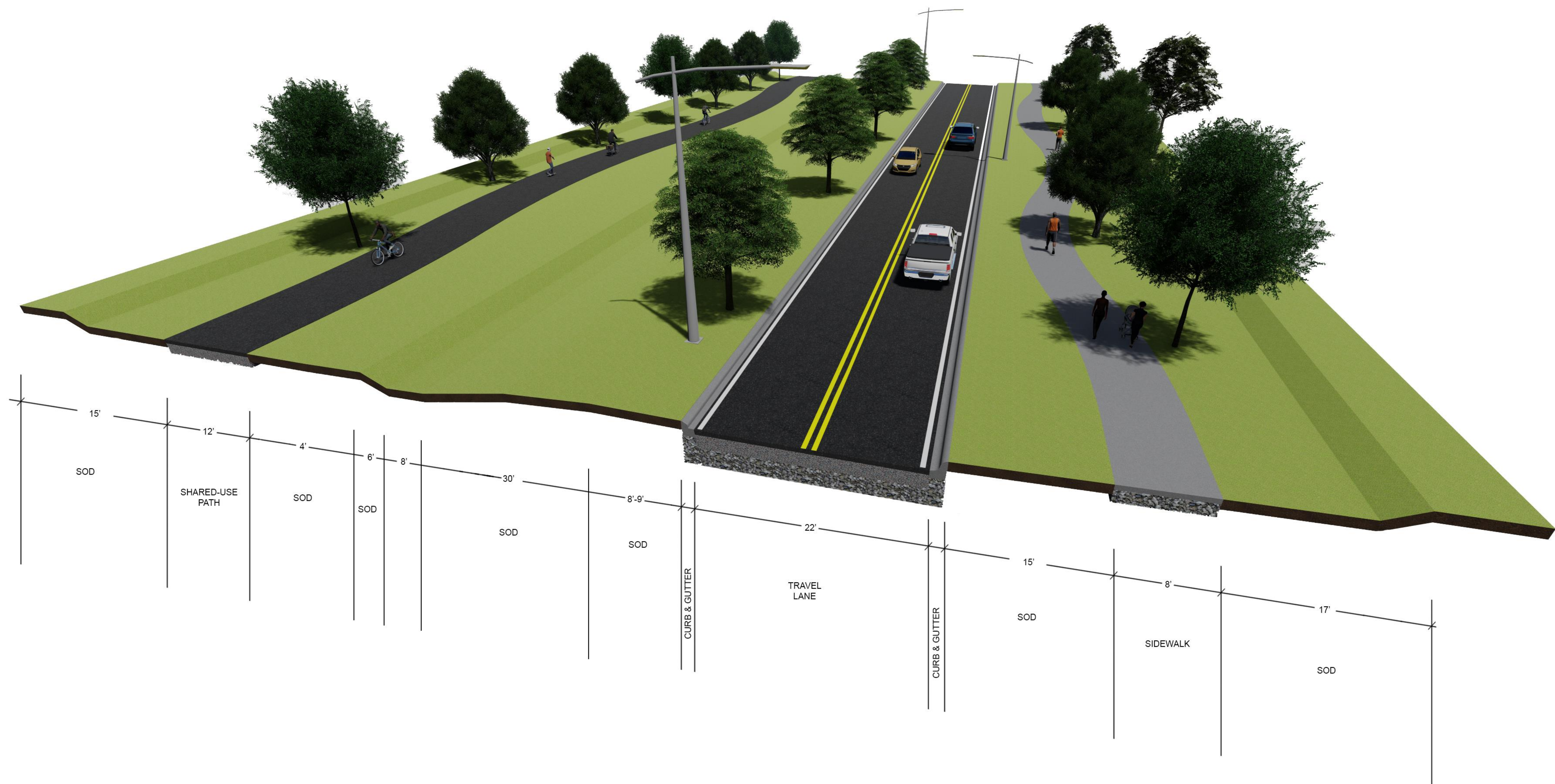
**Legend**

- Typical Section 1
- Typical Section 2
- Typical Section 3
- Potential Typical Section 4 Location
- Typical Section 5
- Miccosukee Canopy Road Greenway
- Canopy Community Development District (CCDD)
- Wetlands



# Proposed Typical Section 1 (Urban)

Color denoted on the Proposed Typical Section Overview Board

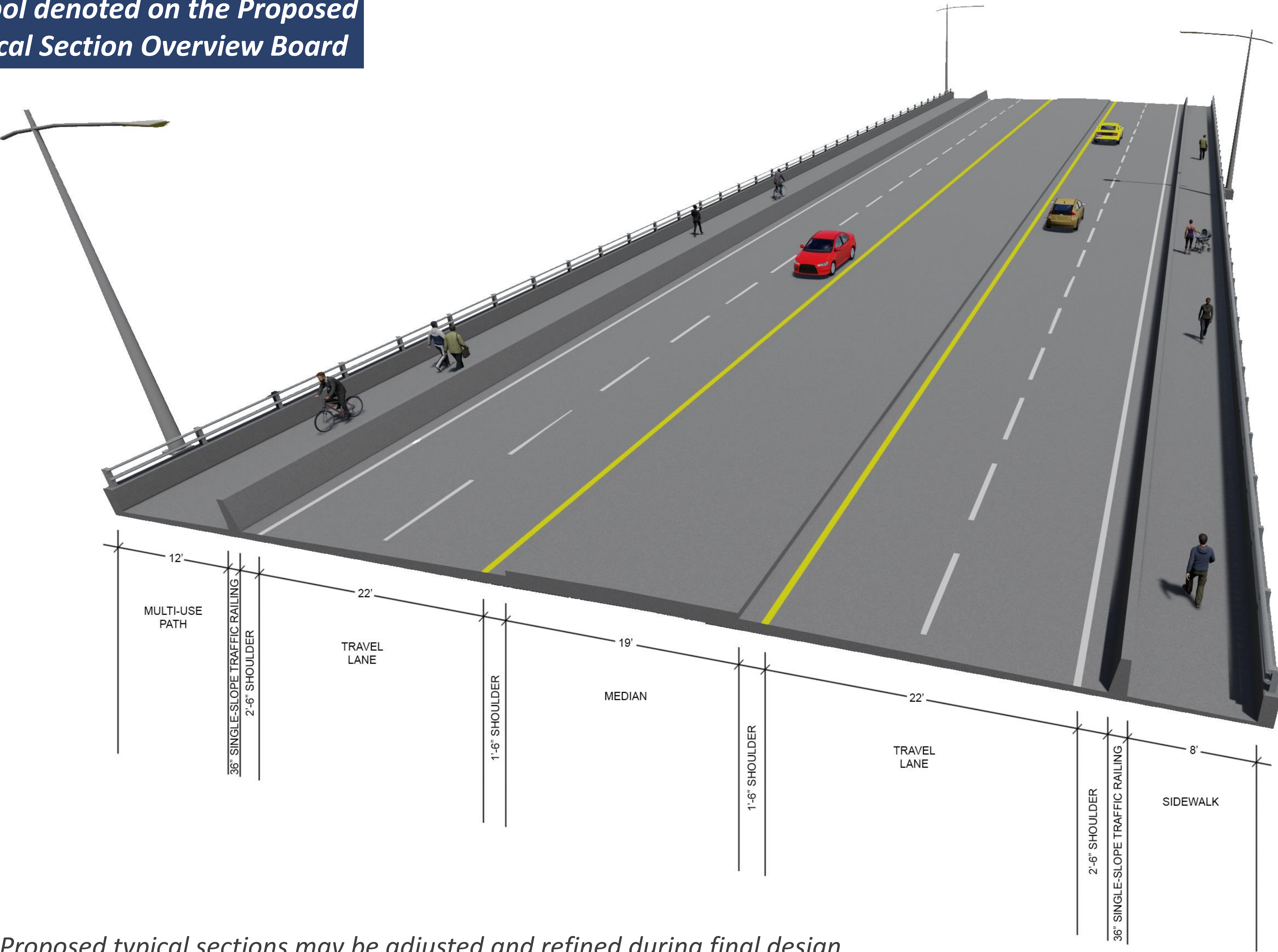


*Note: Proposed typical sections may be adjusted and refined during final design.*



# Proposed Typical Section 2 (I-10 Bridge)

Symbol denoted on the Proposed Typical Section Overview Board

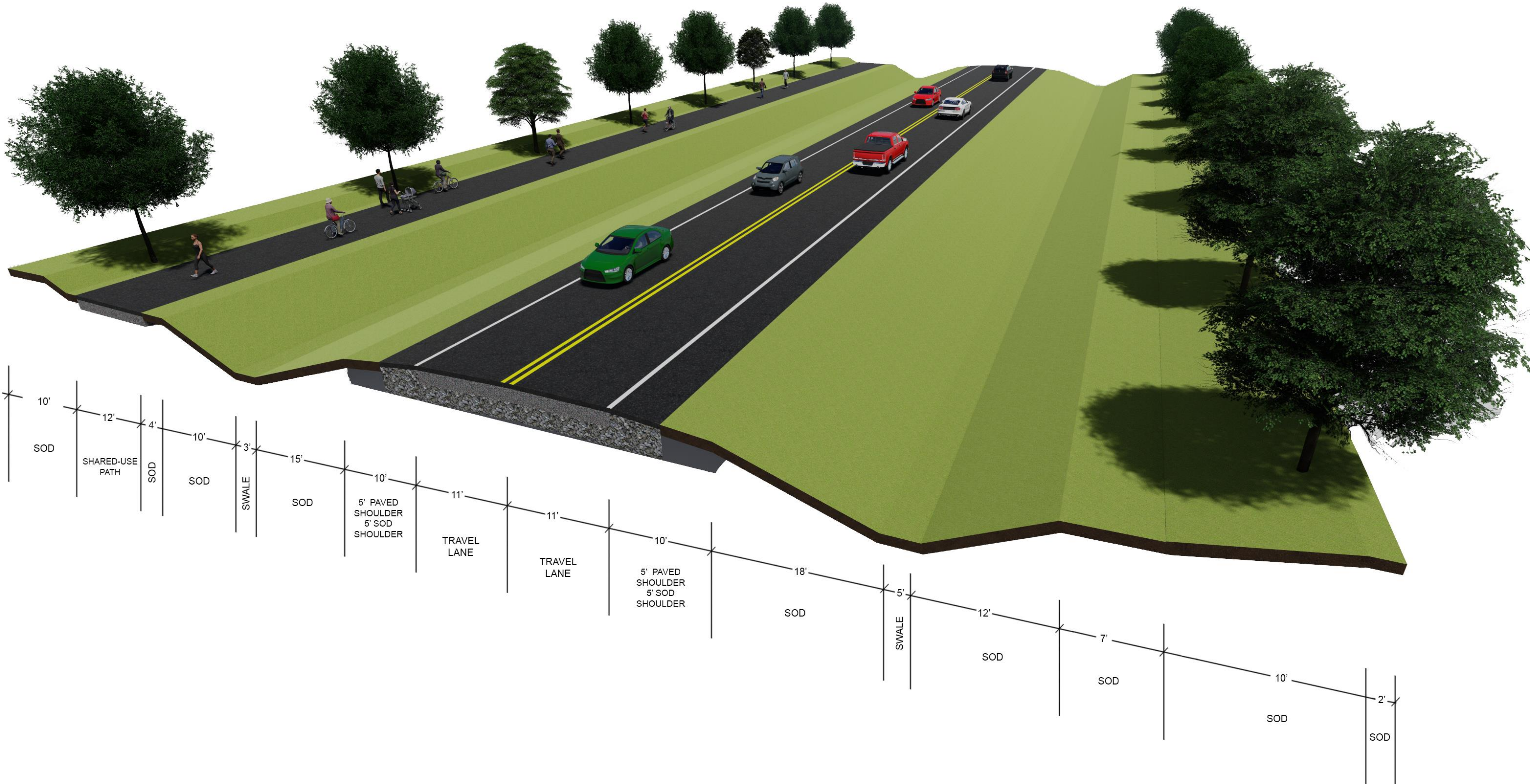


*Note: Proposed typical sections may be adjusted and refined during final design.*



# Proposed Typical Section 3 (Rural)

*Color denoted on the Proposed Typical Section Overview Board*

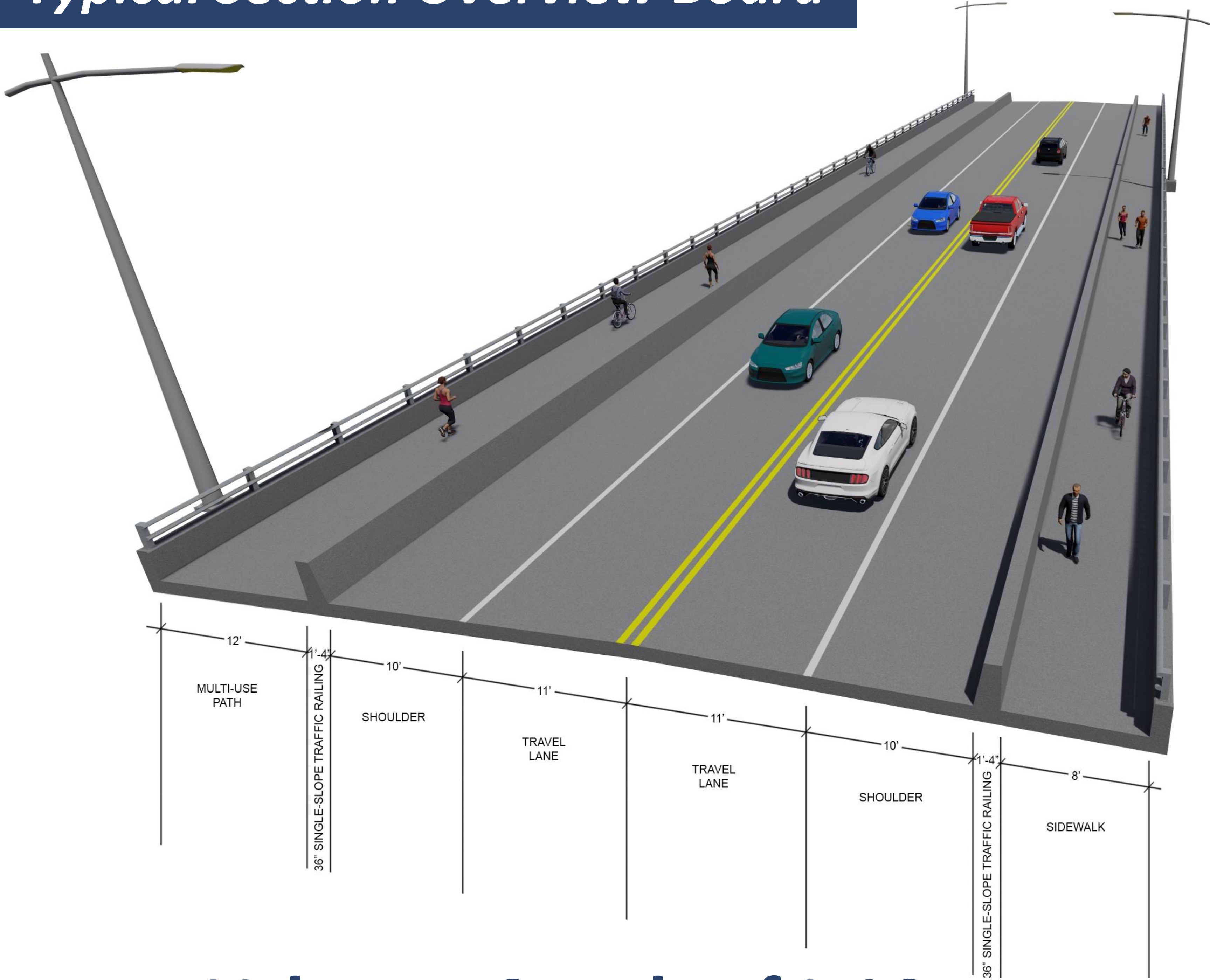


*Note: Proposed typical sections may be adjusted and refined during final design.*

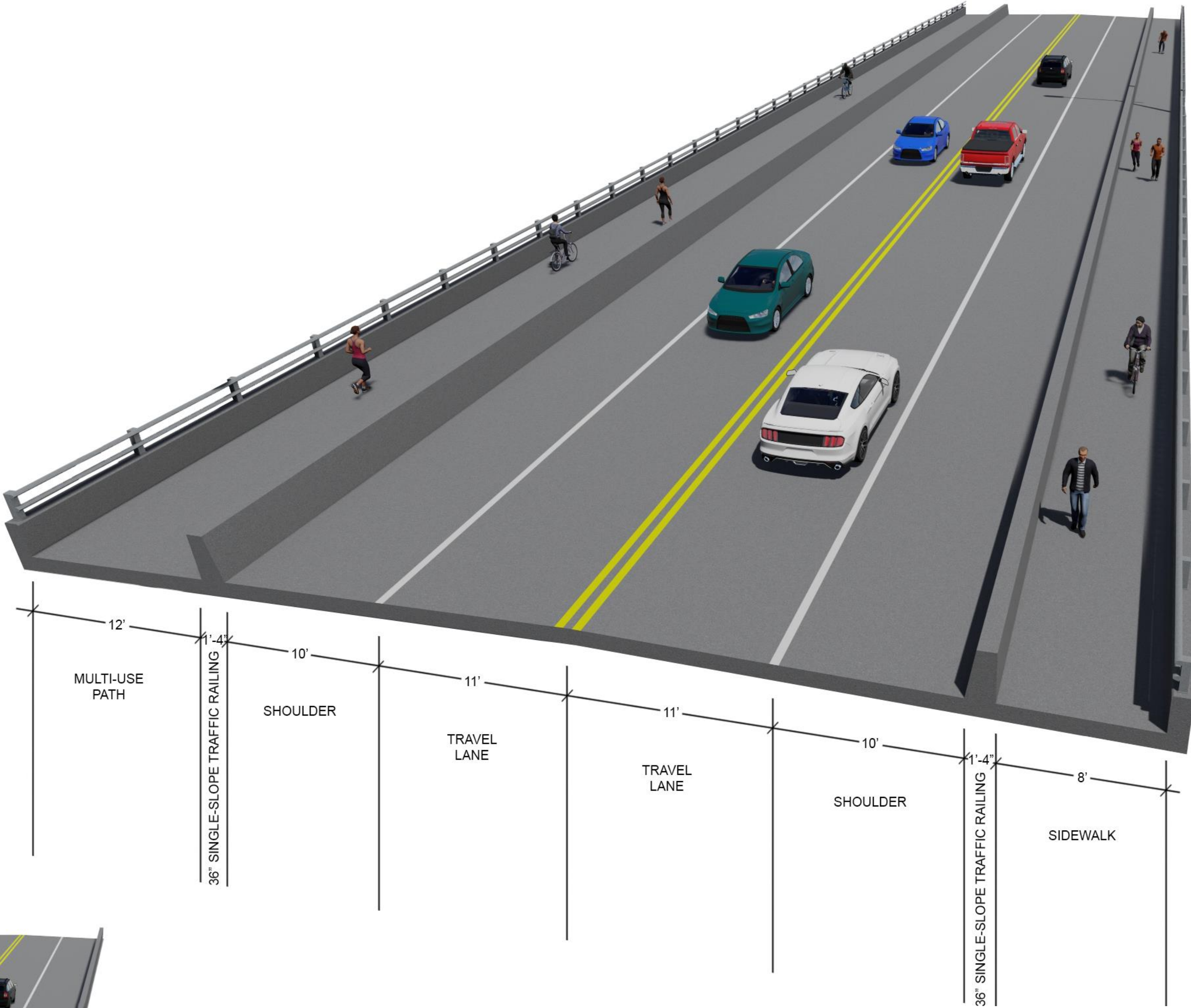


# Proposed Typical Section 4 (Wetland/Floodway Crossings)

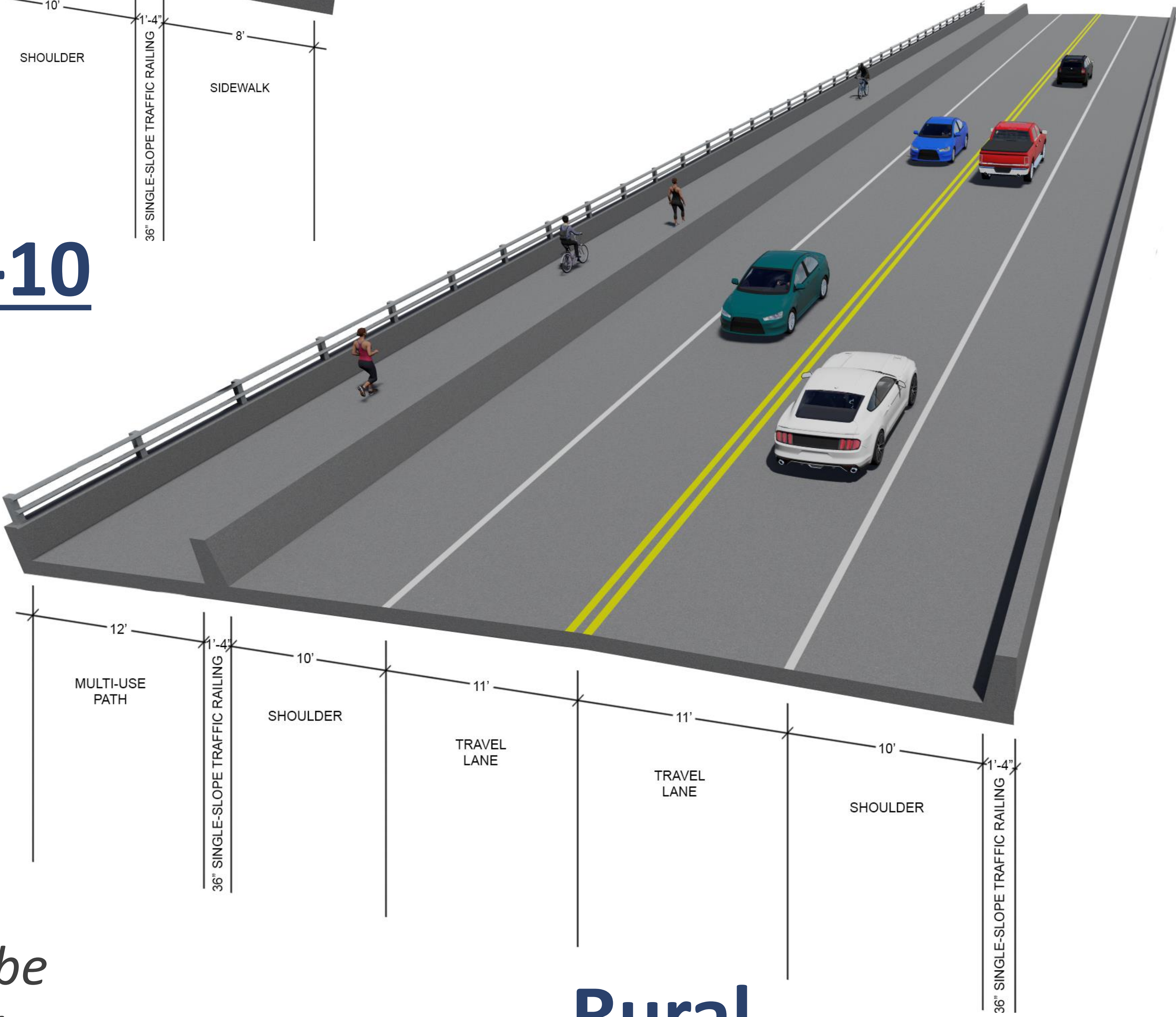
Symbol denoted on the Proposed Typical Section Overview Board



Urban – South of I-10



Urban – North of I-10



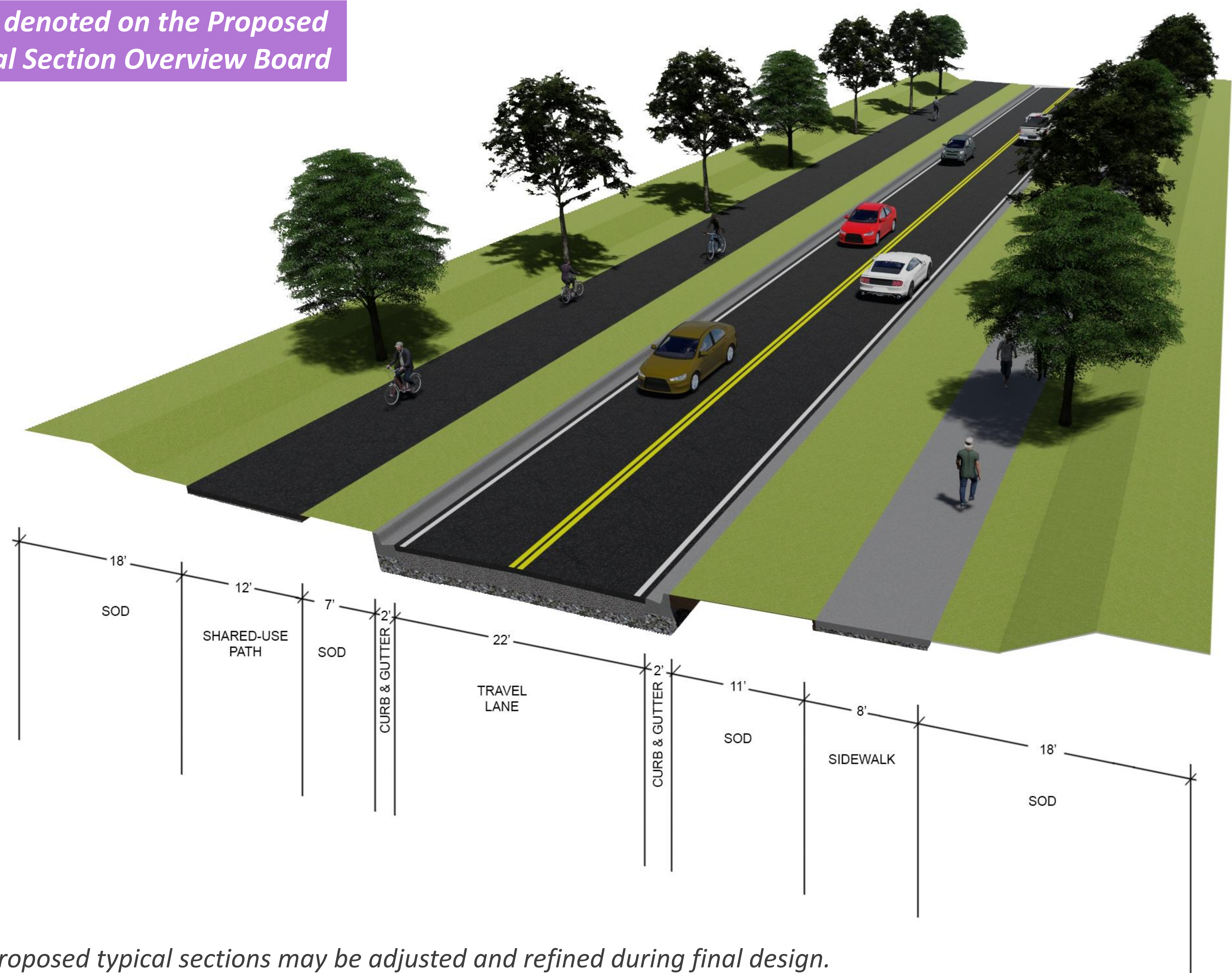
Rural

*Note: Proposed typical sections may be adjusted and refined during final design.*



# Proposed Typical Section 5 (Shamrock Street Extension)

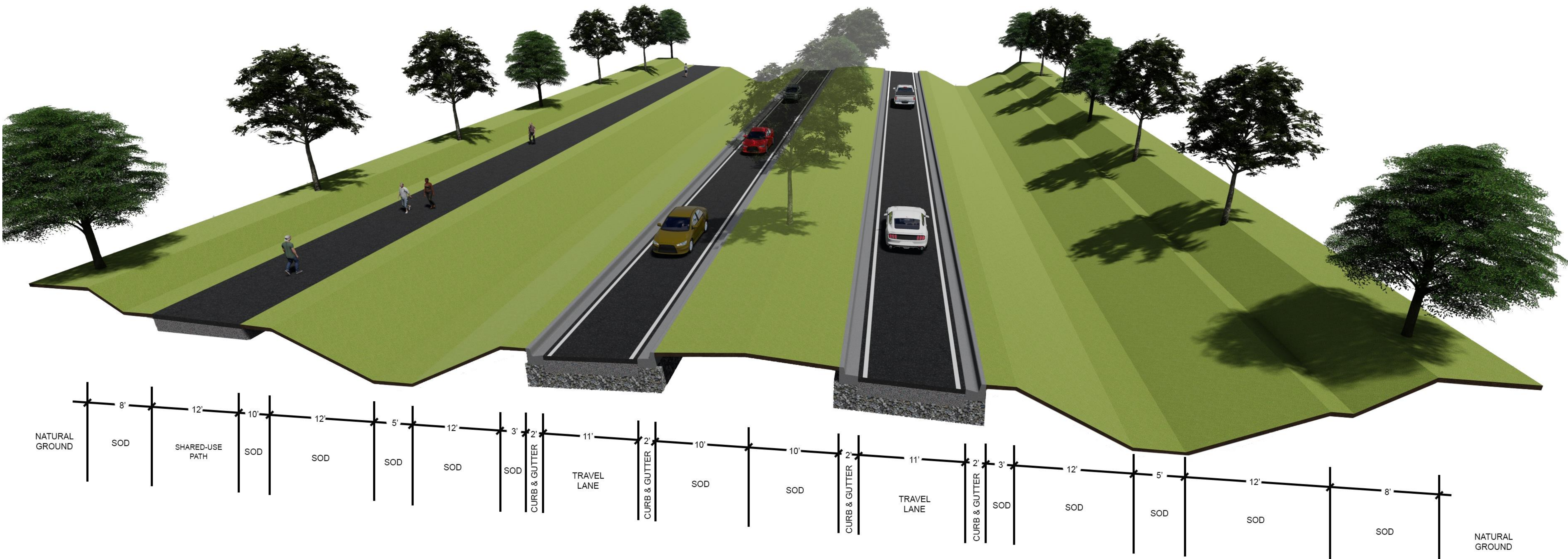
Color denoted on the Proposed Typical Section Overview Board



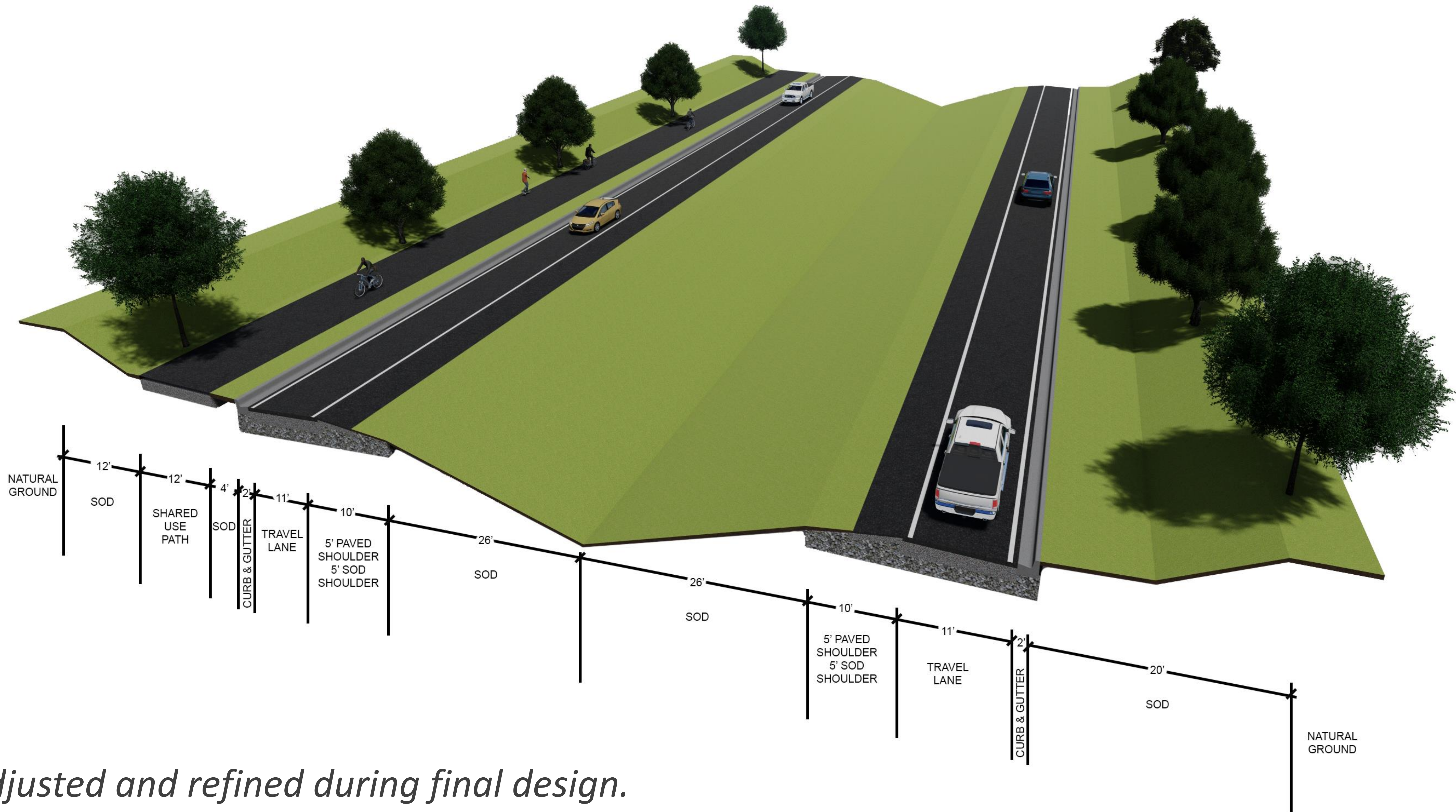
*Note: Proposed typical sections may be adjusted and refined during final design.*



Alternative 1

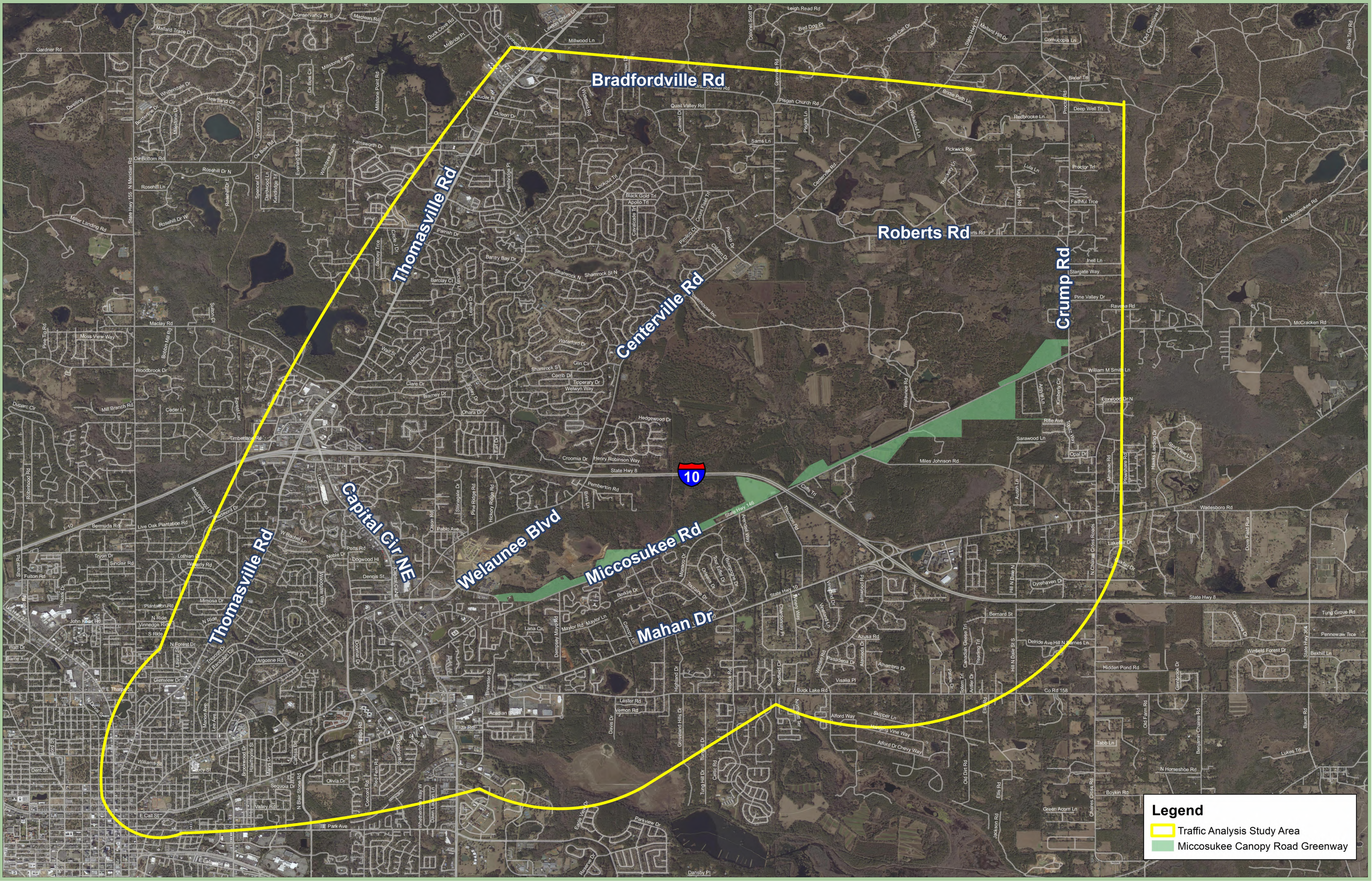


Alternative 2





*Note: Proposed typical sections may be adjusted and refined during final design.*





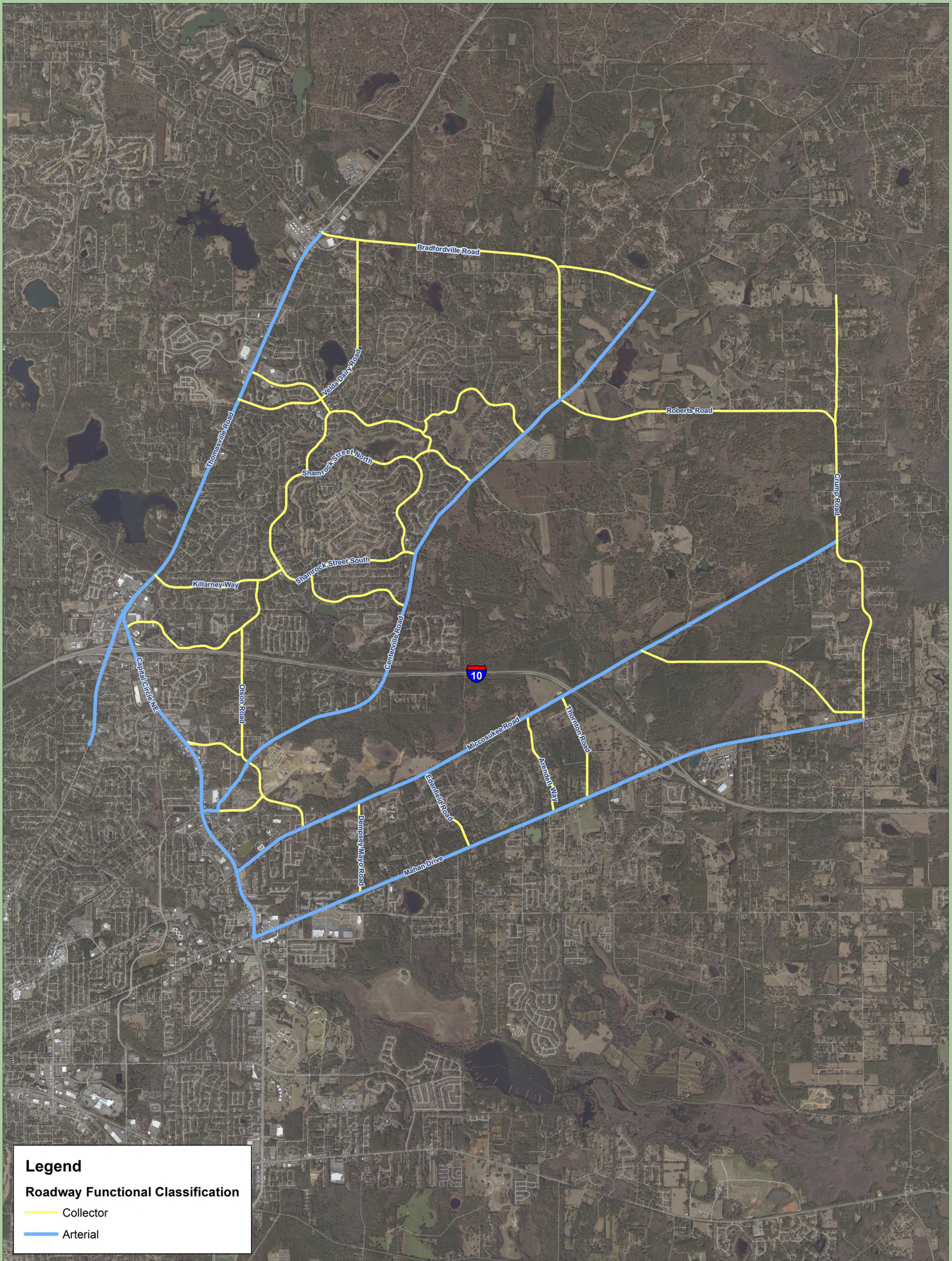
**Legend**

-  Traffic Analysis Study Area
-  Miccosukee Canopy Road Greenway





# Modeling Study Area Roadways





## **Roadway Construction:**

**\$104.6 M in Total Output (Sales/Revenues)**

**650 Jobs Created & \$33 M of Income Generated**

**Fiscal Impacts of \$10.5 M in Taxes**

## **Non-Roadway Development:**

**\$2.2 B to \$8.2 B in Total Output (Sales/Revenues)**

**18,500 to 70,400 Jobs Created &  
\$848 M to \$3.3 B of Income Generated**

**Fiscal Impacts of \$263 M to \$1.0 B in Taxes** *(based on overall construction costs and expected first year of permanent jobs)*

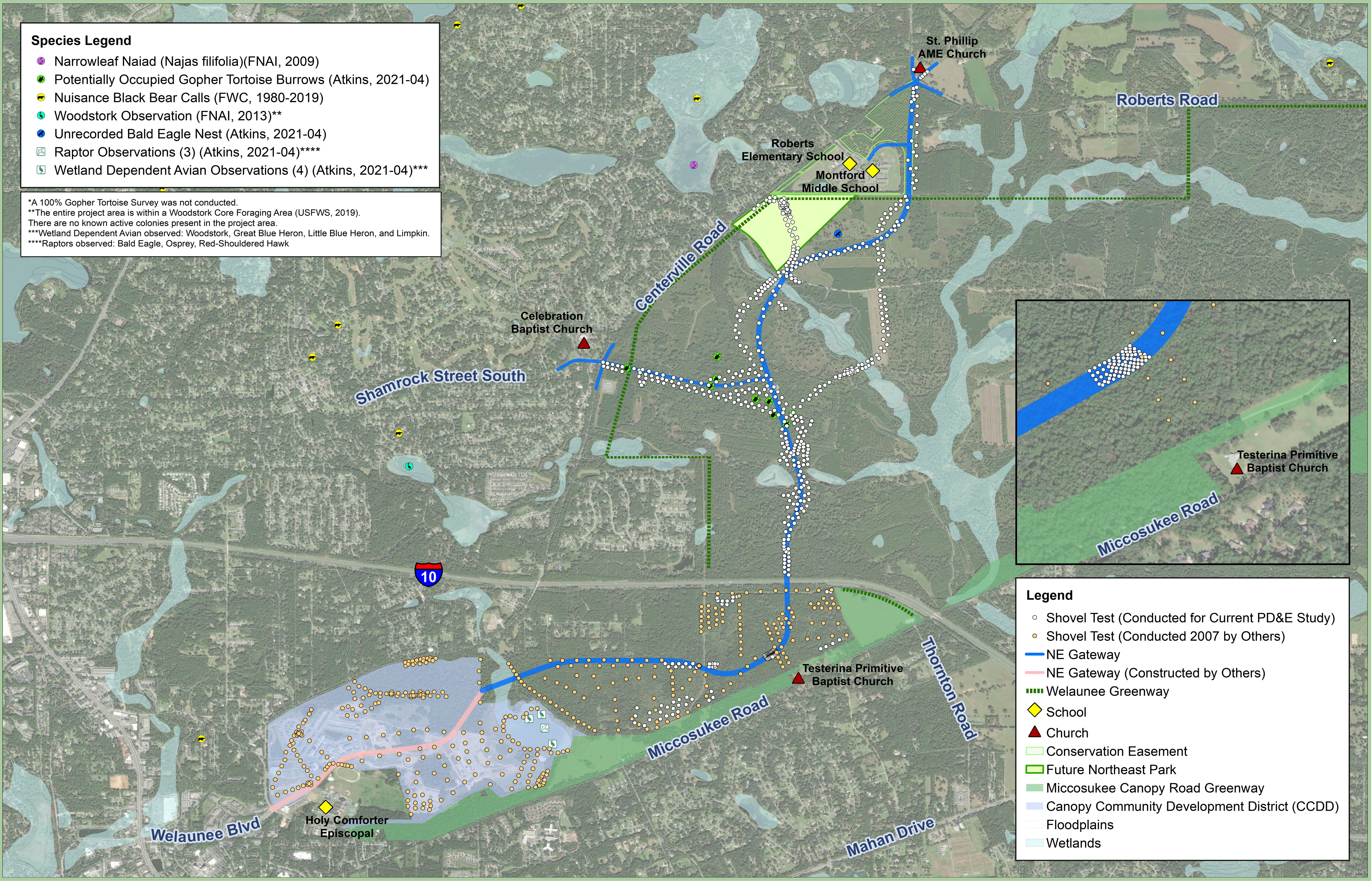
**Improved Traffic System will save citizens approximately**

**\$2.0 M in 2025 & \$4.8 M in 2045**

**in car maintenance and fuel costs**

\*All amounts are reported in 2021 dollars







# Evaluation Matrix

Evaluation Criteria	No Build Alternative	Build Alternative
<b>Purpose and Need</b>		
Improve Regional Mobility	No Improvement	Improvement
Enhance Connectivity for Motorized and Non-Motorized Users	No Enhanced Connectivity	Provides Motorized and Non-Motorized Connectivity
Reduce Traffic Congestion on Adjacent Roadways	No Congestion Relief	Provides Congestion Relief
Provide an Alternative Route for Existing Users of Centerville and Miccosukee Roads	No Alternative Route	Provides an Alternative Route
Support Ongoing and Proposed Development of the 7,000-acre Welaunee Critical Area Plan	No Enhanced Support	Provides Support
Provide Relief to US 319 (Thomasville Road) and US 90 (Mahan Drive)	No Relief	Provides Relief
<b>Engineering</b>		
Traffic Operations and Mobility	No Improvement	Improvement
Utility Involvement	No Involvement	9 Utility Providers
Safety	No Improvement	Improved Safety and Congestion Relief
Access Management	No Improvement	Improved Access
<b>Socio-Economic</b>		
Relocation Potential	None	None
Right-of-Way-Acquisition	None	Minimal Impacts
Emergency Response/Evacuation	No Improvement	Improved Access and Connectivity
Schools/Students	No Improvement	Improved Connectivity
Conservation Areas	No Involvement	10.0 acres
Parks/Recreation Areas	No Improvement	Improved Connectivity
Aesthetics	No Improvement	Improved Aesthetics
Public Comments	Unsatisfied	Satisfied
Economic Development	No Improvement	Improvement
Canopy Roads	No Impact	Impact
Residential Neighborhoods and Housing	No Impact	Property Impacts (2.75 acres)
Places of Worship	No Impact	Property Impacts (0.25 acres)
<b>Environmental</b>		
Wetlands/Surface Waters	No Involvement	1.62 acres
Stormwater/Drainage	None	9 ponds
Threatened & Endangered Species	No Involvement	Minimal Involvement
Contamination	No Involvement	6 Potential Sites: Low Risk Rating
Air Quality	Reduced Due to Congestion	Improved with Congestion Relief and Roundabout Implementation
Noise	No Impact	No Impacted Sites
Floodplains	No Involvement	3.46 acres
Trees/Forests	No Involvement	11.5 acres
Cultural/Historical/Archaeological	No Impact	No Effect
<b>Cost</b>		
Design	\$0	\$6,700,000
Right-of-Way	\$0	\$1,800,000
Mitigation	\$0	\$200,000
Construction and CEI Cost	\$0	\$61,100,000
<b>TOTAL PROJECT COST</b>	<b>\$0</b>	<b>\$ 70,800,000</b>





Northeast Gateway: Welaunee Boulevard  
Project Schedule

	2020		2021				2022		2023		2024		2025		2026		2027		2028	
	3rd Q	4th Q	1st Q	2nd Q	3rd Q	4th Q	1-6 Months	7-12 Months	1-6 Months	7-12 Months	1-6 Months	7-12 Months	1-6 Months	7-12 Months	1-6 Months	7-12 Months	1-6 Months	7-12 Months	1-6 Months	7-12 Months
Planning/Pre-Engineering																				
Design																				
Right-of-Way Acquisition																				
Welaunee Blvd/Shamrock Ext Construction																				
I-10 Interchange Planning																				
I-10 Interchange Design																				
I-10 Interchange Construction																				